



NH's UST Walkthrough Inspection

Spruce C. Wheelock, NHDES
Inspector Oil Compliance Section



NH's First Walkthrough Approach

- **2004 - Vapor Recovery Stage I/II Monthly Inspections**
 - Vent Risers and Vent Caps; Spill Containment; Fill and Vapor Adaptors, Caps; Nozzles and Hoses;
- **Annual Vapor Recovery Maintenance Inspection**
 - Removal of Adaptors (exception for swivels); Application of Thread Sealant, and Tightening; Drain Valves; Caps/Dust Covers Not In Contact with Access Covers; Distance Between Drop Tube Bottom and Tank Bottom;

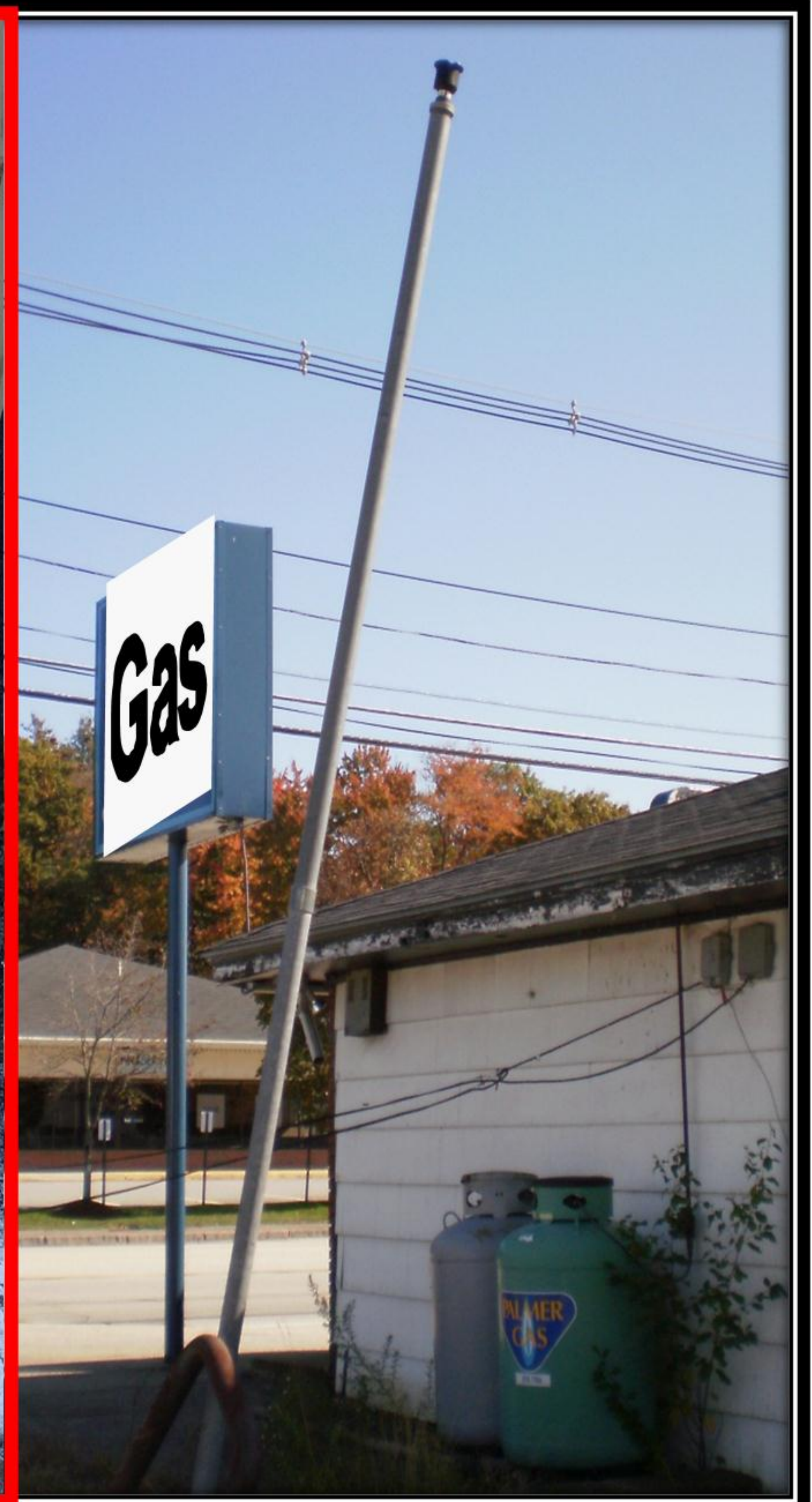
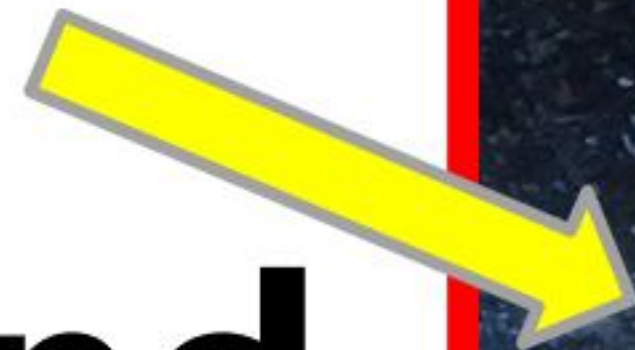
Current NH Monthly Walkthrough

- **Adopted** with Operator Training Legislation, effective **August 8, 2012**
- Conducted by or under the direction of the class A or B operator
- Maintain records for 3 Years
- Check for defect and or and how it was resolved
- Deficiencies found, shall be repaired or resolved within 30 days

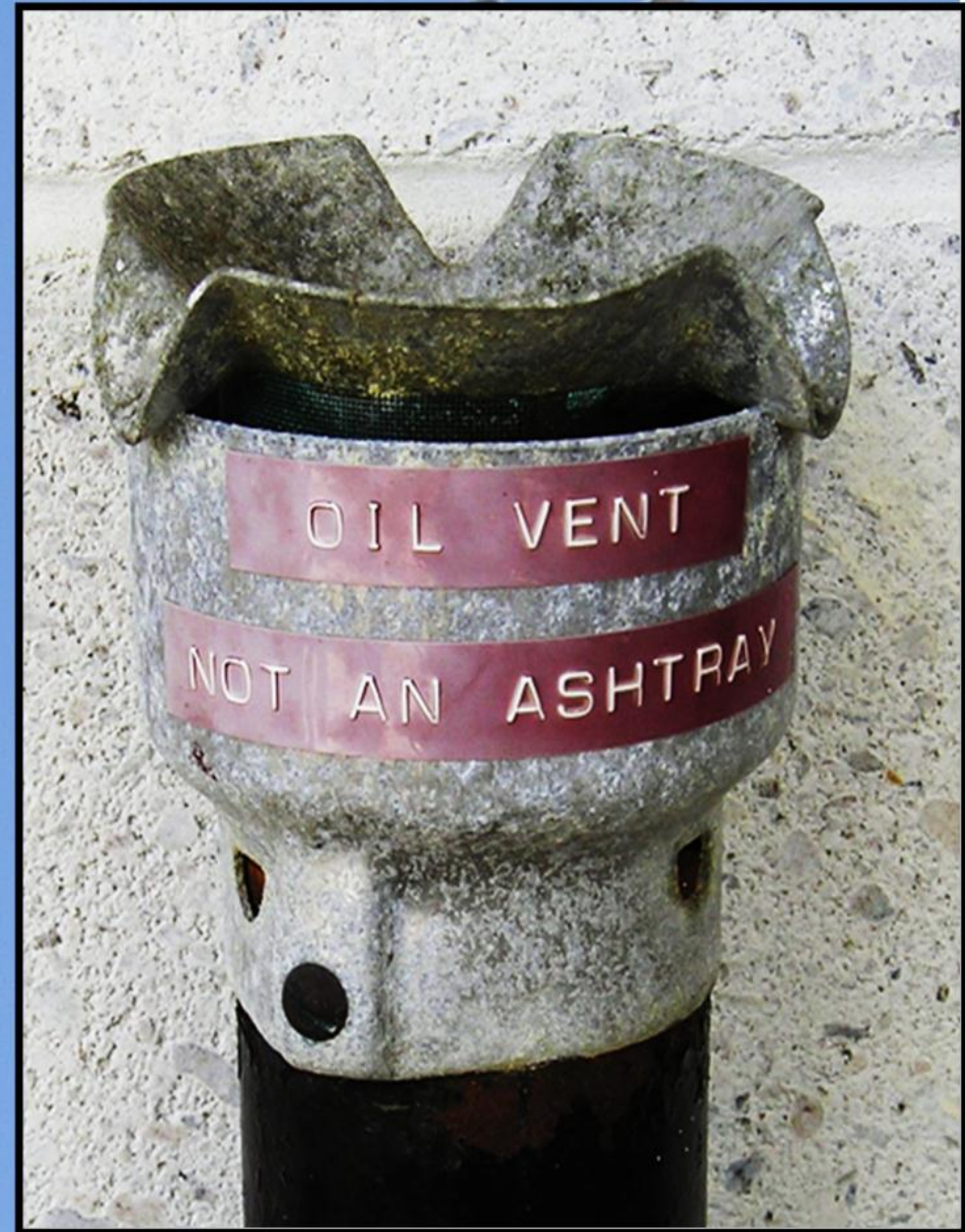
A&B Operator Training

- We teach Walkthrough as part of our A&B operator training
- **A&B training** (2 year certification)
- Training classes
 - Once a month at the state
 - Additional remote classes around the state

Vent Risers - Inspect For Visible Damage and Repair as Necessary



Vent Caps – If Missing or Damaged -- Replace the Cap



Spill Containment – Inspect Spill Bucket for Presence of Oil, Water, or Debris





Adaptor Caps – Looseness, Gasket, Tight





NEIWPCC UST Walkthrough Inspections - Webinar - June 27th 2016

Fill & Dry Break – Tightness of Fit



Dry Break Poppet Valve – Continuous Seal, Evenly Depresses, Properly Reseats



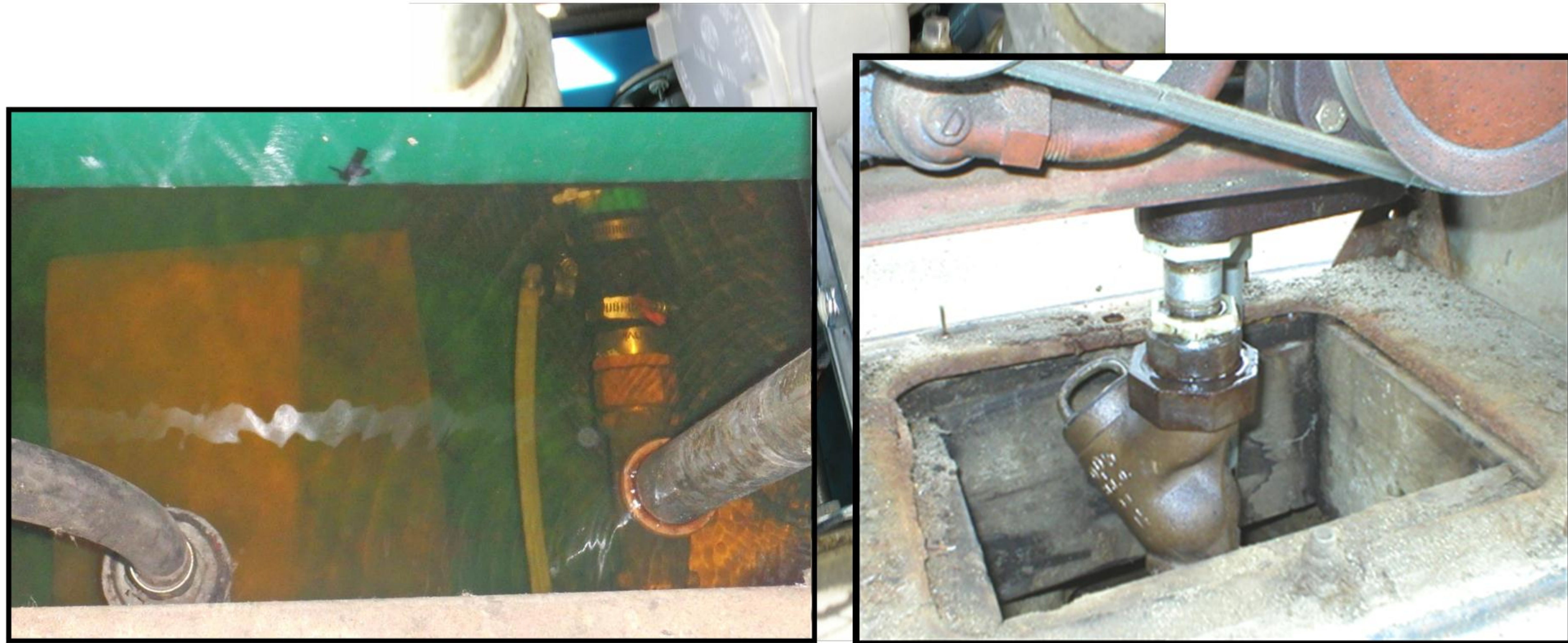
Dispenser Hoses - tears, leaks, holes, kinks, crimps, or defects of any kind



Dispenser Nozzle - leaks, obstruction of vapor recovery holes, or defects of any kind



Dispenser Cabinet - leaking components and the presence of oil, water, or debris



Oil Transfer and Dispensing Areas - presence of oil spills



Alarm Enunciation Panel - proper operation of product monitoring and leak detection systems



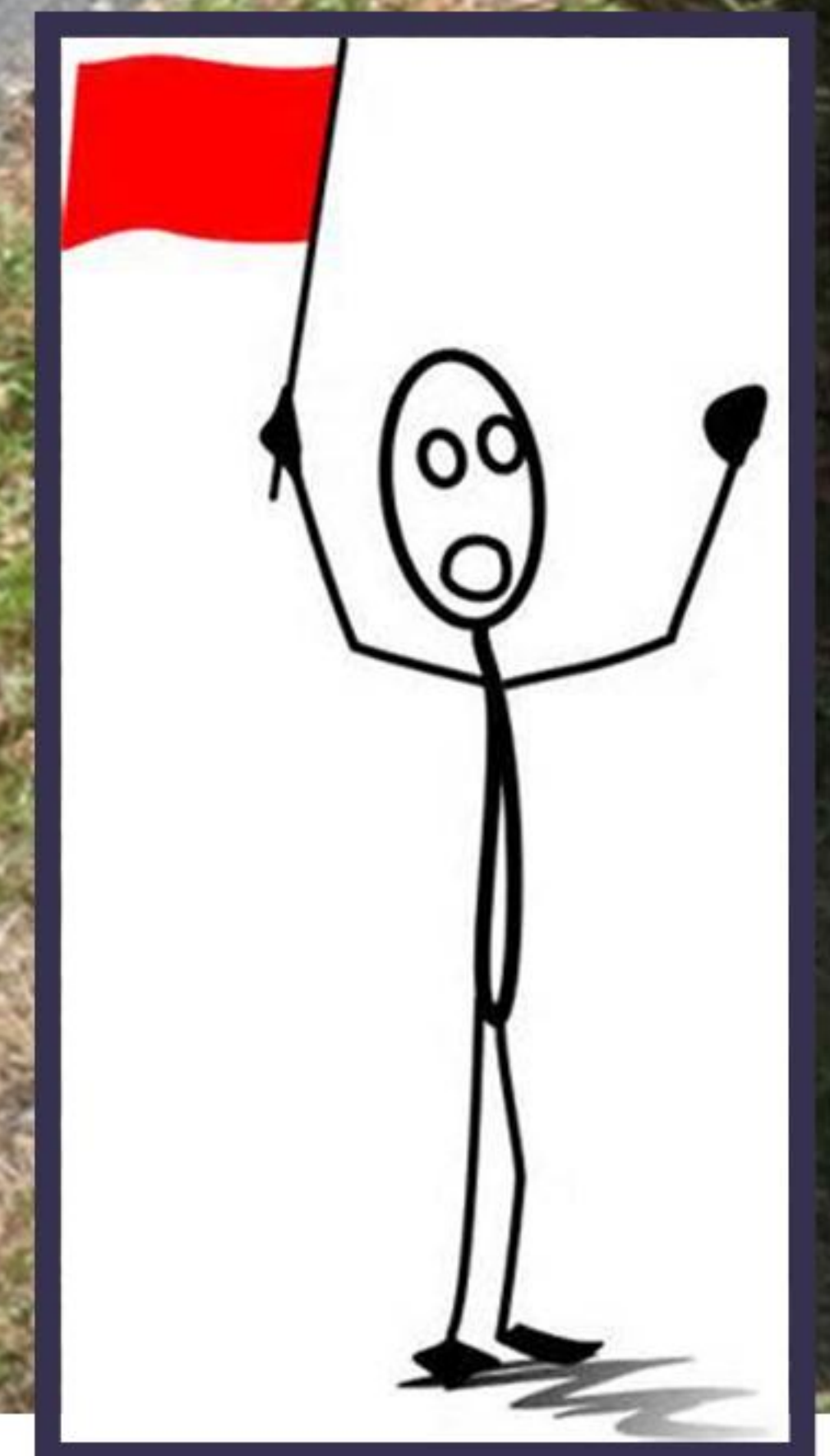
Paying Attention to Detail Can Go a Long Way...



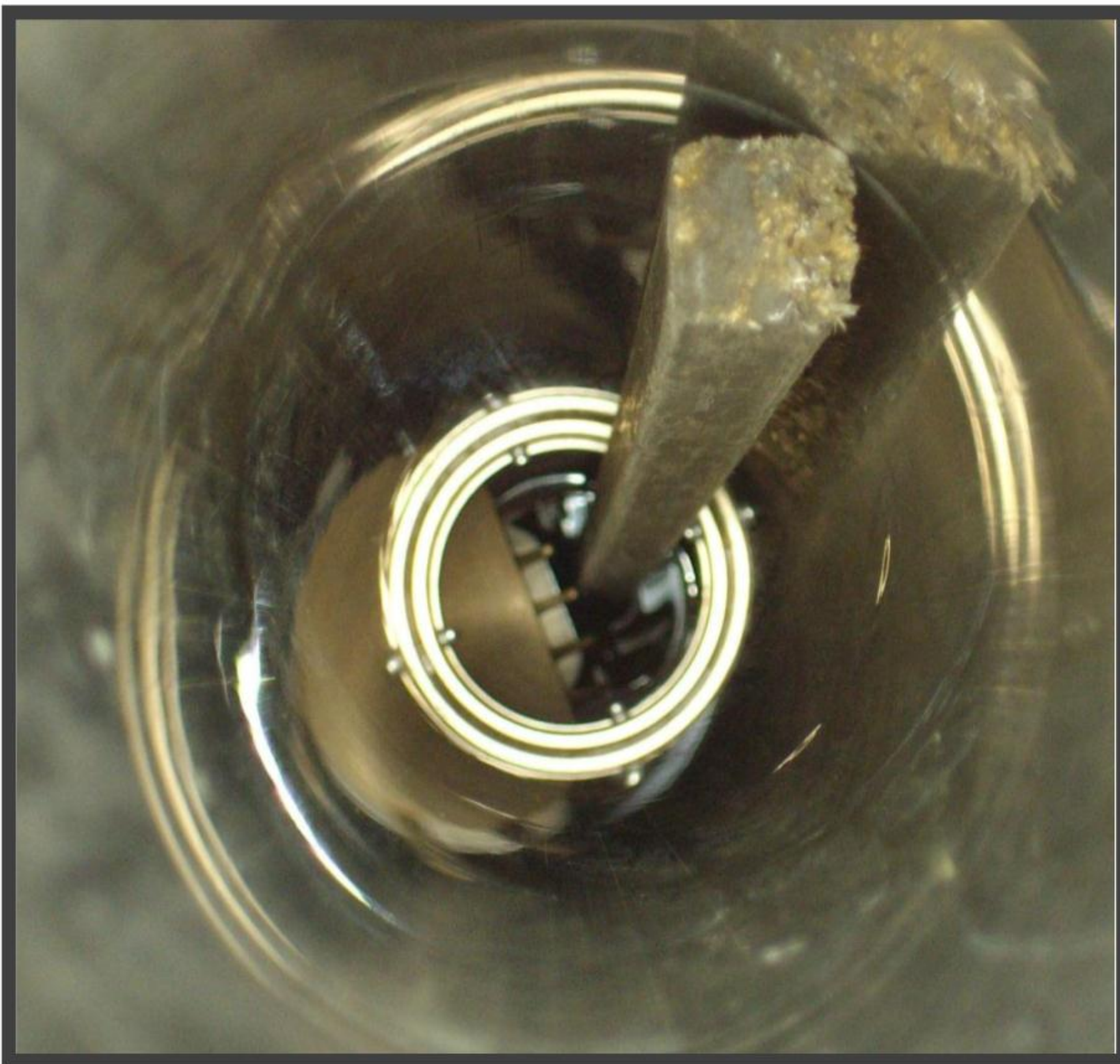
Short or broken inventory sticks

What is this?

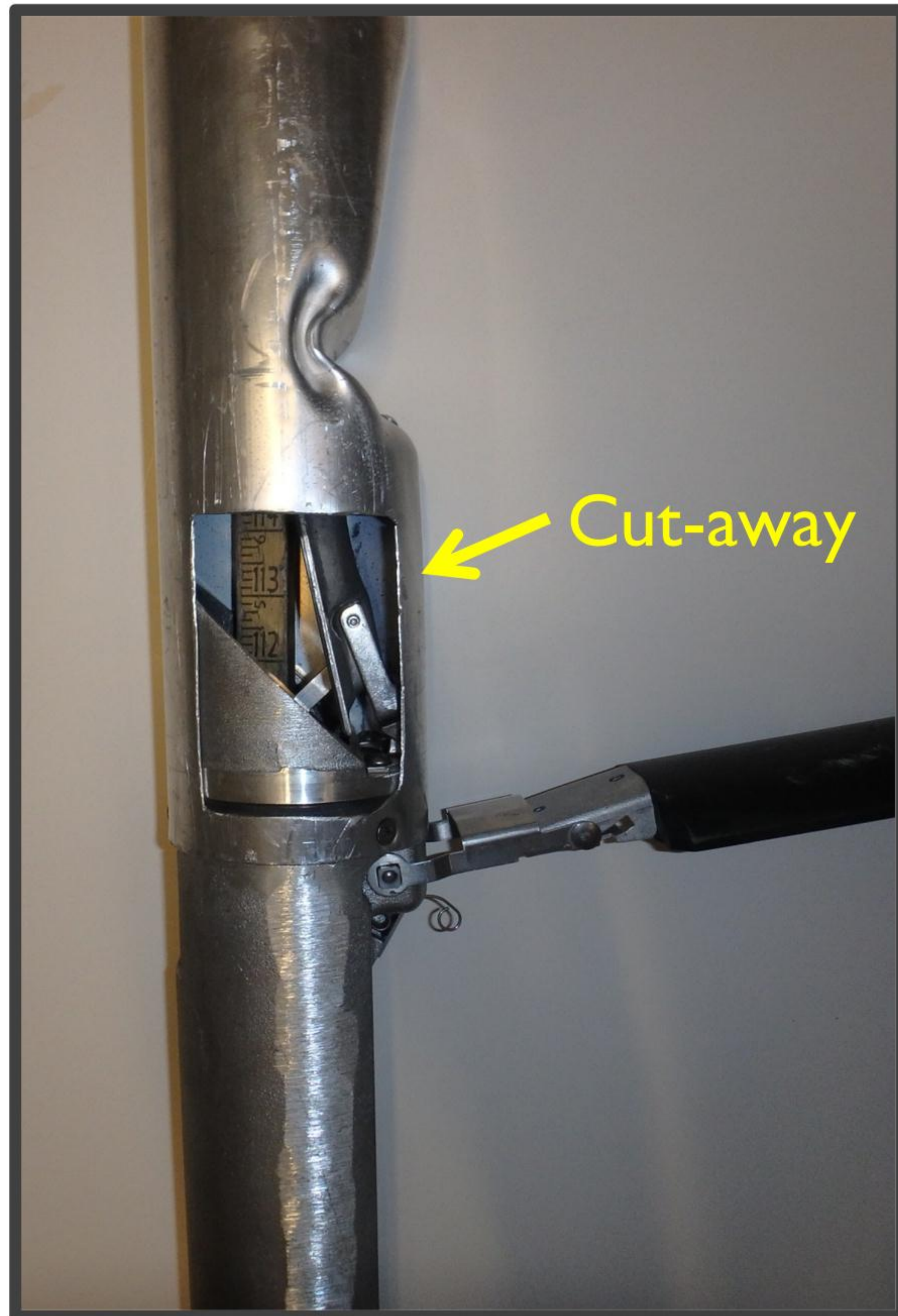
NEHVPCCT Walkthrough Inspections - Webinar - June 27th 2016



Inside fill drop tube



Overfill bypass



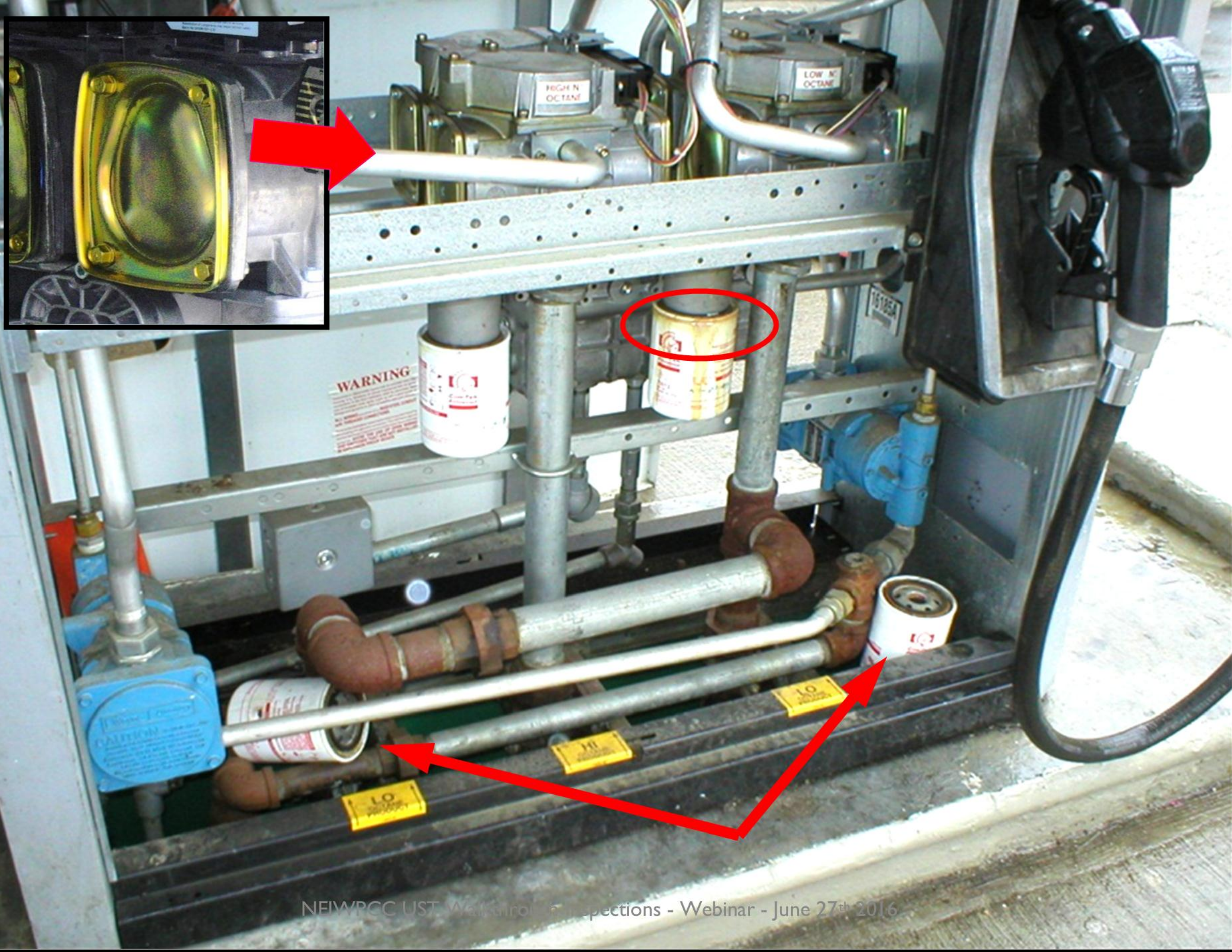
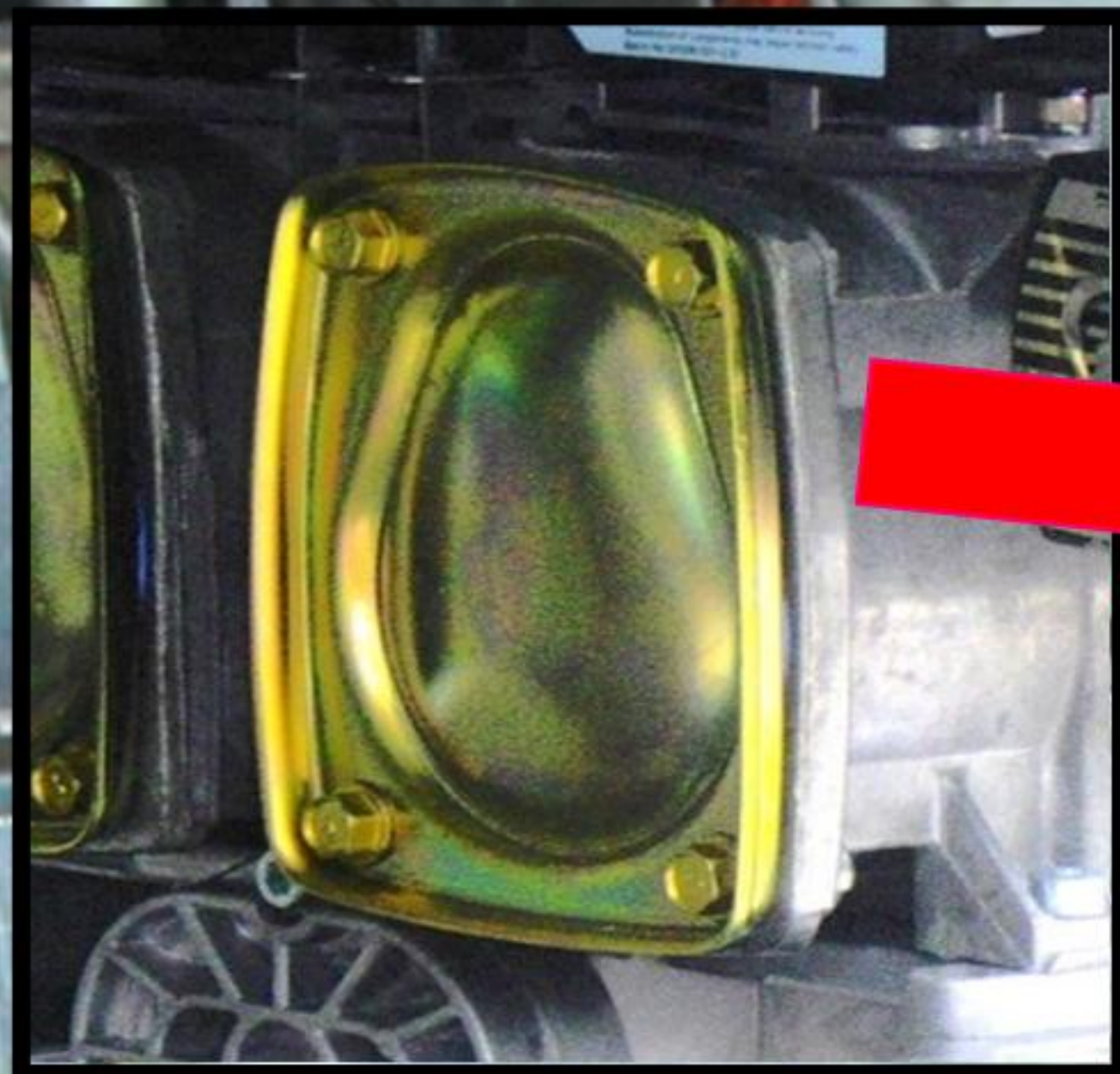
Crack

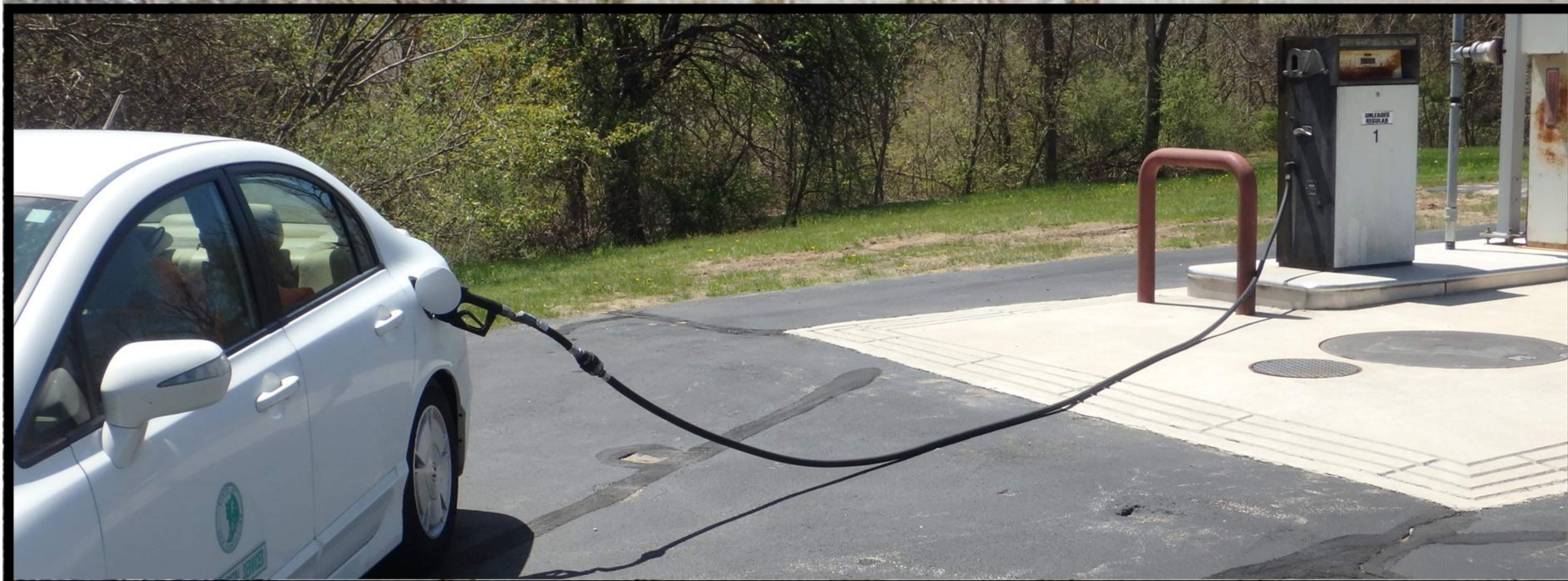




Cracks

Dispenser Sump Bottom





Positive Limiting Barrier (PLB)

Color Marking



Proper Operation?

I have all my
records????

Audible or Visual in
alarm????

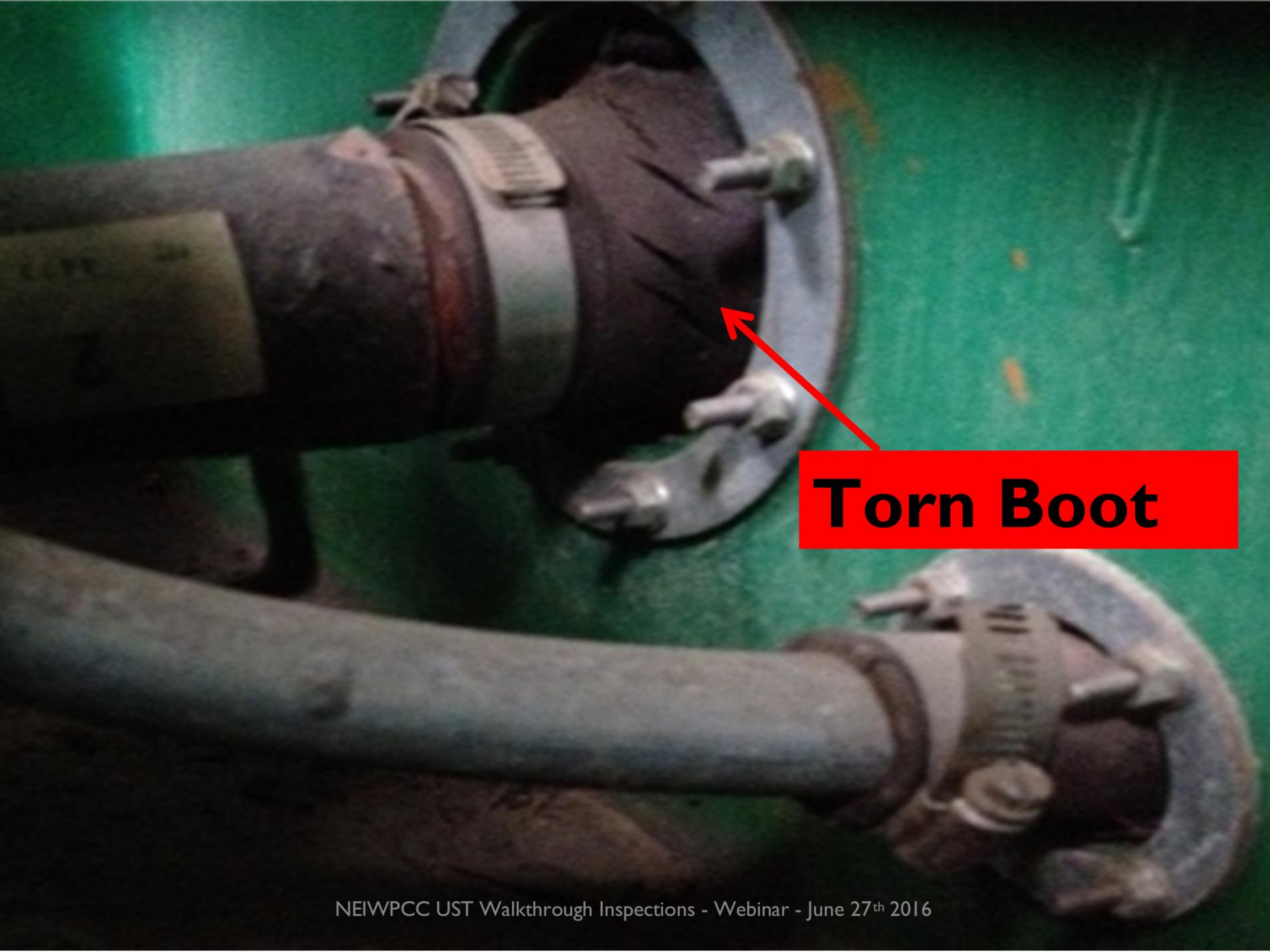


NFPA 30A requires latch to hold open -- fuel delivery nozzle Except Marinas



\$500,000





Torn Boot

Things to Consider

- Who conducts walkthroughs?
- Owner designed forms may be lacking
- Create an educational walkthrough program
- What else can you catch on the walkthrough?
- Bottom Line – Awareness!
 - Protect the environment and one's safety

Contact Information



Spruce C. Wheelock

NH Department of Environmental
Services

29 Hazen Drive, PO Box 95

Concord, NH 03302-0095

spruce.wheelock@des.nh.gov

(603) 271-2933

