



Nonpoint Pollution Control with Clean Water State Revolving Fund (SRF) Loans

Eliza Keeley-Arnold – Nonpoint Funding Coordinator

March 22nd, 2021

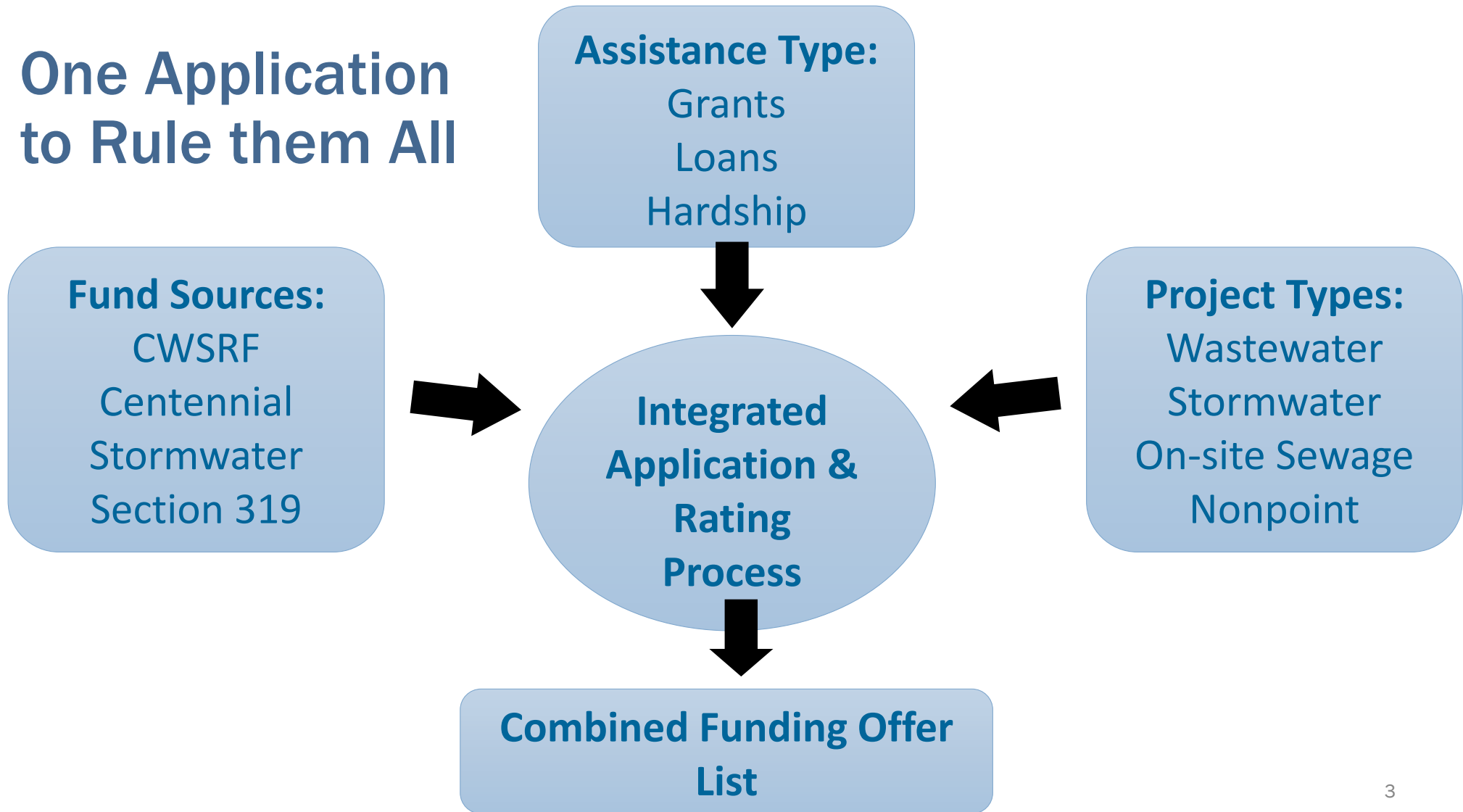


Water Quality Combined Funding Program



Multiple fund sources, one application

One Application to Rule them All



Competitive Funding

- One application = streamlined process
- Multiple funding sources
- Predictable, annual cycle
- Competitive rating and ranking process
 - Two evaluators per application: one local, one across the state



Who can apply?

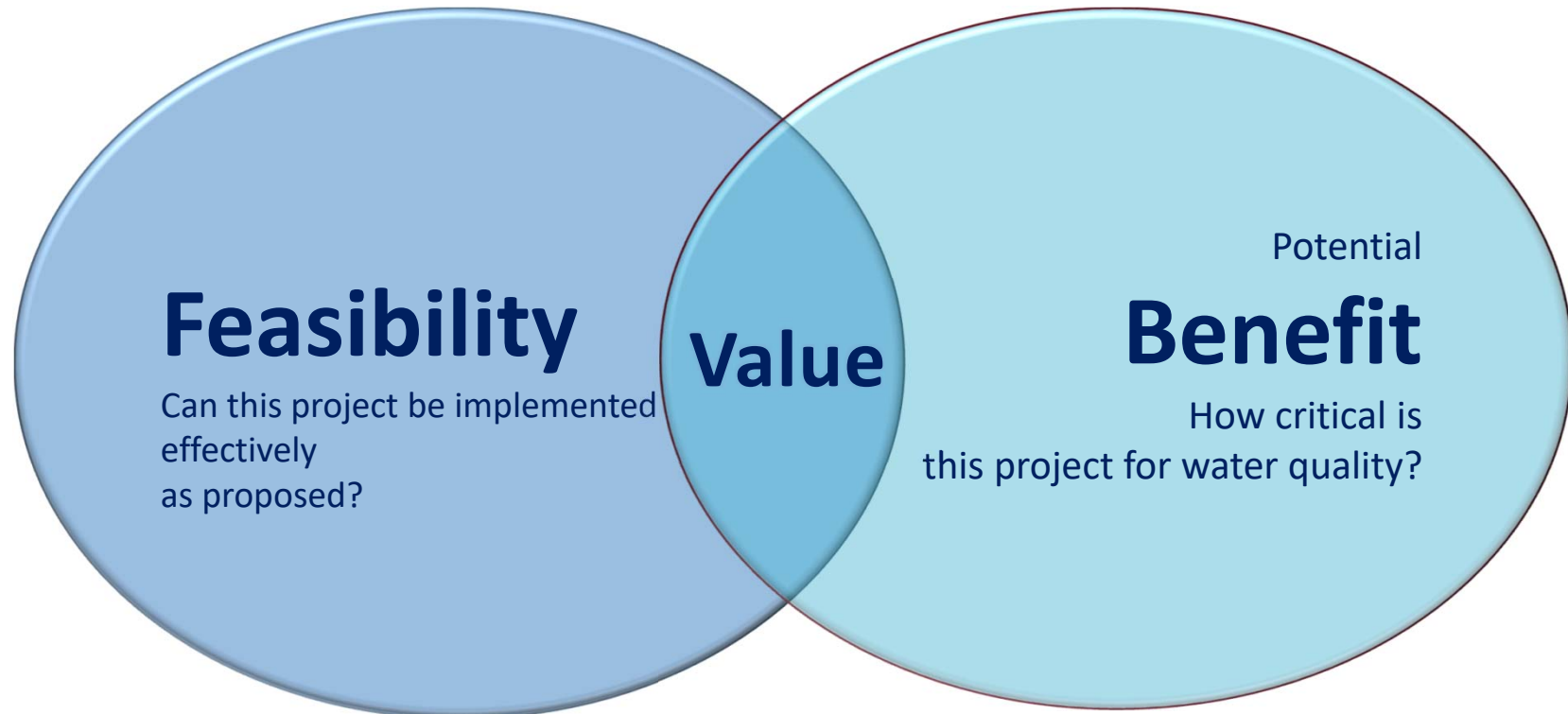


- Special purpose districts
 - Conservation
 - Irrigation
 - Water and sewer
 - Port

- Towns, cities, counties
- Tribes
- Non-profit organizations (only eligible for 319)

Evaluating for Effective Use of Funds

Scoring criteria are a balance of “can they do it” and “should they do it”



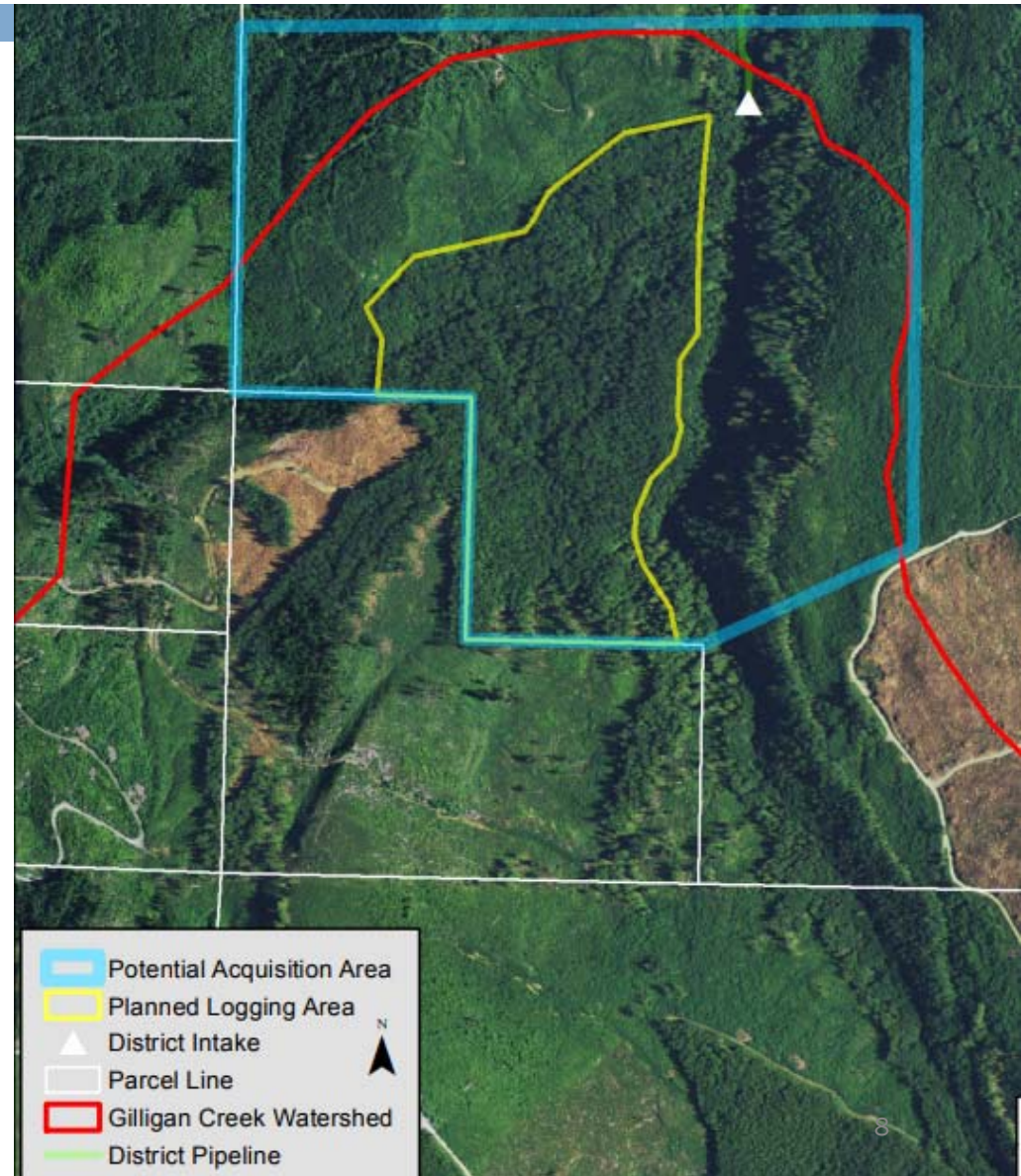



Nonpoint Projects with SRF

Land acquisitions and direct seed conversions

Gilligan Creek – Drinking Source Water Protection -Land Acquisition

- Standard loan \$1.1M
- Forgivable loan \$0.4M
- Prevented a planned clear cut surrounding the creek that supplies drinking water for over 50k people





Direct seed is a farming technique that reduces erosion, protecting streams and salmonid habitat from overloads of sediment and nutrient pollution.

This benefits farmers by conserving and improving soil from season to season.

Direct Seed Equipment Loan Program – Spokane Conservation District

\$24.7M of SRF provided by Ecology since 1995

For over 15 years this Direct Seed Loan Program has helped farmers transition from conventional to no-till and direct seed practices on nearly 700,000 acres.

The Spokane CD leverages Ecology grant and loan dollars with their own funds to perform outreach and provide loans to local farmers to purchase direct seed equipment.



On-Site Septic Repair and Replacement

Over \$50M of SRF since 1992
~\$10M of that as forgivable principal

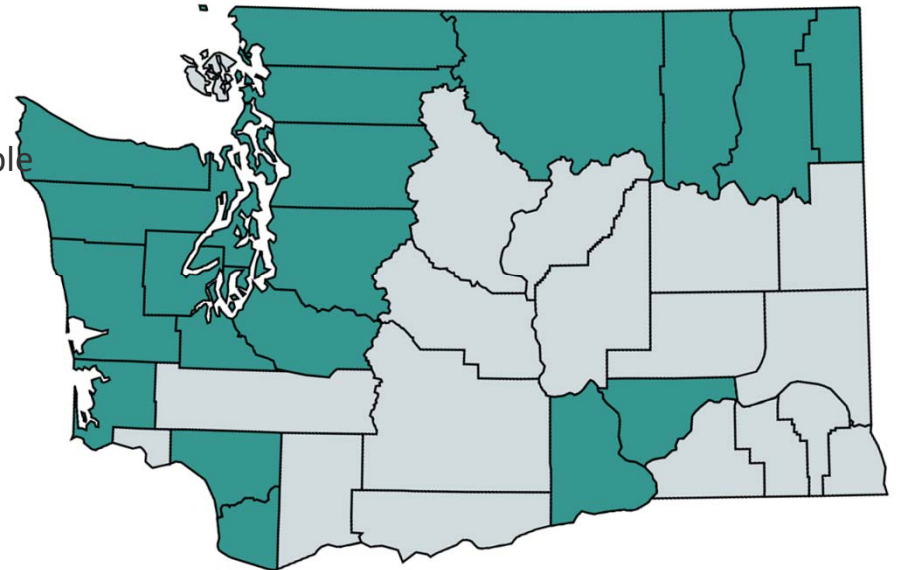
Regional Loan Program

Allows local health jurisdictions to connect landowners to affordable lending without financial risk or program overhead.

Nearly 150 million gallons of wastewater addressed with proper treatment through the program

Public-Private Partnership
Ecology & Health
Craft3
Local Governments

1,124 projects completed
32% to hardship-eligible borrowers





High Profile Water Quality Priorities

Challenges and opportunities

Eastern WA

Sediment in the Hangman Watershed



Photo credit: Renee Kinnick – Habitat Biologist, Washington Dept. Fish Wildlife

Western WA

Temperature
and Nutrient
Impairments in
Puget Sound



Hope, resources and kudos for good work

- [Ecology's Water Quality Combined Funding Program](#)
- [Pacific Northwest Direct Seed Association](#)
- [Craft 3 Loans for Septic Repair](#)
- [Squalicum Creek Re-route, City of Bellingham](#)



Governor's Executive Order:
[Orca Recovery Funding](#)
[Southern Resident Orca Task Force](#)

Thank You! Questions?

Eliza Keeley-Arnold

eliza.keeley-arnold@ecy.wa.gov

564-999-1369



DEPARTMENT OF
ECOLOGY
State of Washington