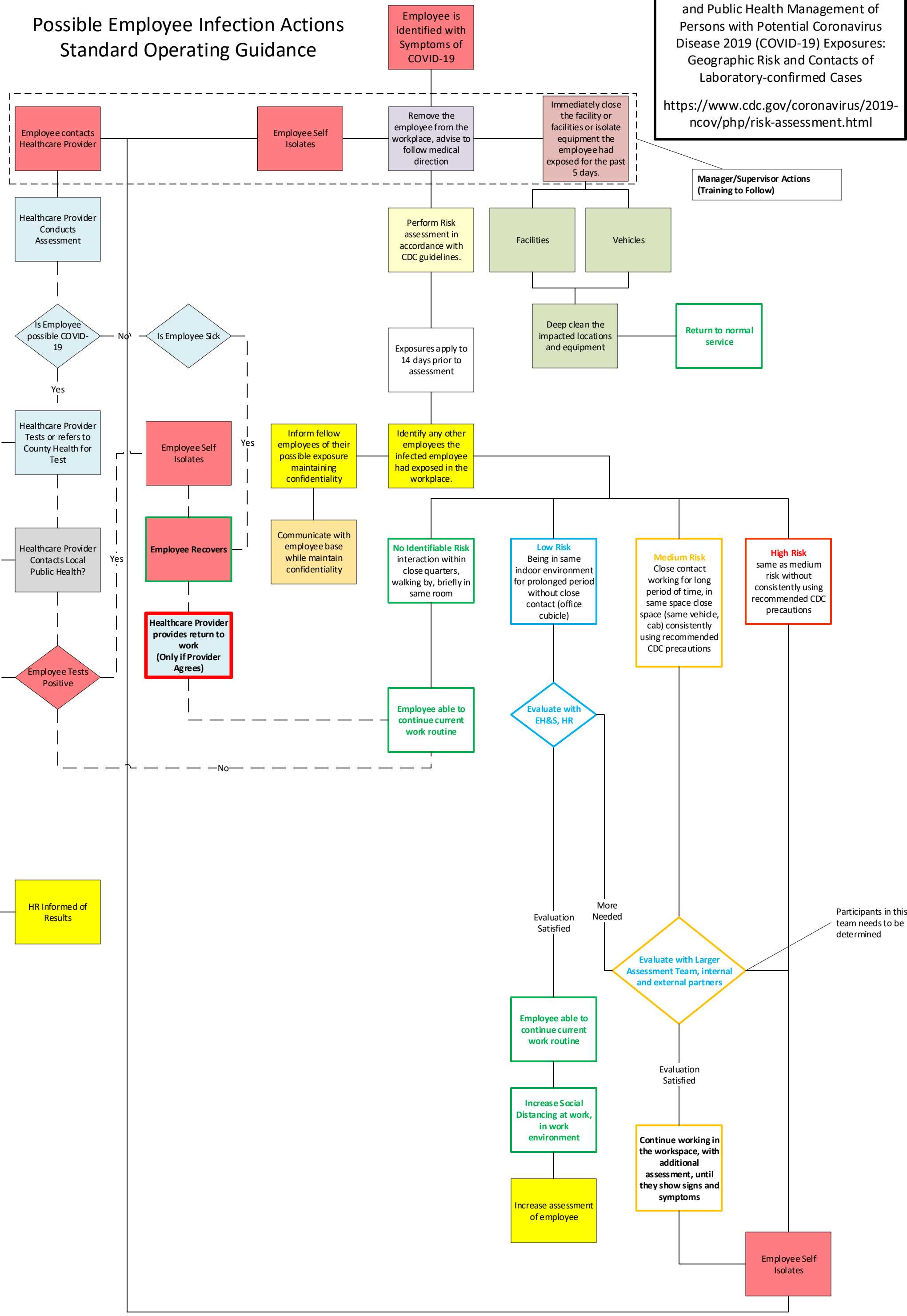


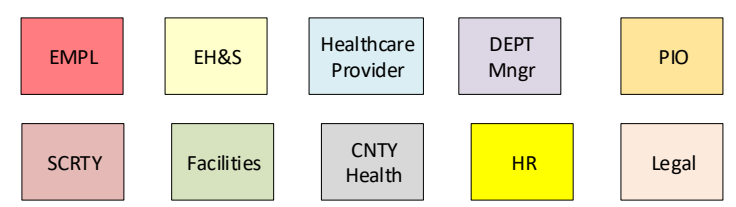
Possible Employee Infection Actions Standard Operating Guidance

Interim US Guidance for Risk Assessment and Public Health Management of Persons with Potential Coronavirus Disease 2019 (COVID-19) Exposures: Geographic Risk and Contacts of Laboratory-confirmed Cases
<https://www.cdc.gov/coronavirus/2019-ncov/php/risk-assessment.html>



| Risk Level | Management If Asymptomatic | Management If Symptomatic ¹ |
|----------------------|---|---|
| High risk | <ul style="list-style-type: none"> Quarantine (voluntary or under public health orders) in a location to be determined by public health authorities. No public activities. Daily active monitoring, if possible based on local priorities Controlled travel | <ul style="list-style-type: none"> Immediate isolation with consideration of public health orders Public health assessment to determine the need for medical evaluation; if medical evaluation warranted, diagnostic testing should be guided by CDC's PUI definition If medical evaluation is needed, it should occur with pre-notification to the receiving HCF and EMS, if EMS transport indicated, and with all recommended infection control precautions in place. Controlled travel: Air travel only via air medical transport. Local travel is only allowed by medical transport (e.g., ambulance) or private vehicle while symptomatic person is wearing a face mask. |
| Medium risk | <p>Close contacts in this category:</p> <ul style="list-style-type: none"> Recommendation to remain at home or in a comparable setting Practice social distancing Active monitoring as determined by local priorities Recommendation to postpone long-distance travel on commercial conveyances <p>Travelers from mainland China (outside Hubei Province) or Iran</p> <ul style="list-style-type: none"> Recommendation to remain at home or in a comparable setting Practice social distancing Self-monitoring with public health supervision as determined by local priorities Recommendation to postpone additional long-distance travel on commercial conveyances after they reach their final destination <p>Travelers from other country with widespread transmission</p> <ul style="list-style-type: none"> Recommendation to remain at home or in a comparable setting. Practice social distancing Self-monitoring Recommendation to postpone additional long-distance travel on commercial conveyances after they reach their final destination <p>Travelers from country with sustained community transmission</p> <ul style="list-style-type: none"> Practice social distancing Self-observation | <ul style="list-style-type: none"> Self-isolation Public health assessment to determine the need for medical evaluation; if medical evaluation warranted, diagnostic testing should be guided by CDC's PUI definition If medical evaluation is needed, it should ideally occur with pre-notification to the receiving HCF and EMS, if EMS transport indicated, and with all recommended infection control precautions in place. Controlled travel: Air travel only via air medical transport. Local travel is only allowed by medical transport (e.g., ambulance) or private vehicle while symptomatic person is wearing a face mask. |
| Low risk | <ul style="list-style-type: none"> No restriction on movement Self-observation | <ul style="list-style-type: none"> Self-isolation, social distancing Person should seek health advice to determine if medical evaluation is needed. If sought, medical evaluation and care should be guided by clinical presentation; diagnostic testing for COVID-19 should be guided by CDC's PUI definition. Travel on commercial conveyances should be postponed until no longer symptomatic. |
| No identifiable risk | None | <ul style="list-style-type: none"> Self-isolation, social distancing Person should seek health advice to determine if medical evaluation is needed. If sought, medical evaluation and care should be guided by clinical presentation; diagnostic testing for COVID-19 should be guided by CDC's PUI definition. Travel on commercial conveyances should be postponed until no longer symptomatic. |

Final Process to be coordinated with Utility, Healthcare Provider and Local Health Department



Participants in this team needs to be determined