

# Future Directions: Building State Capacity

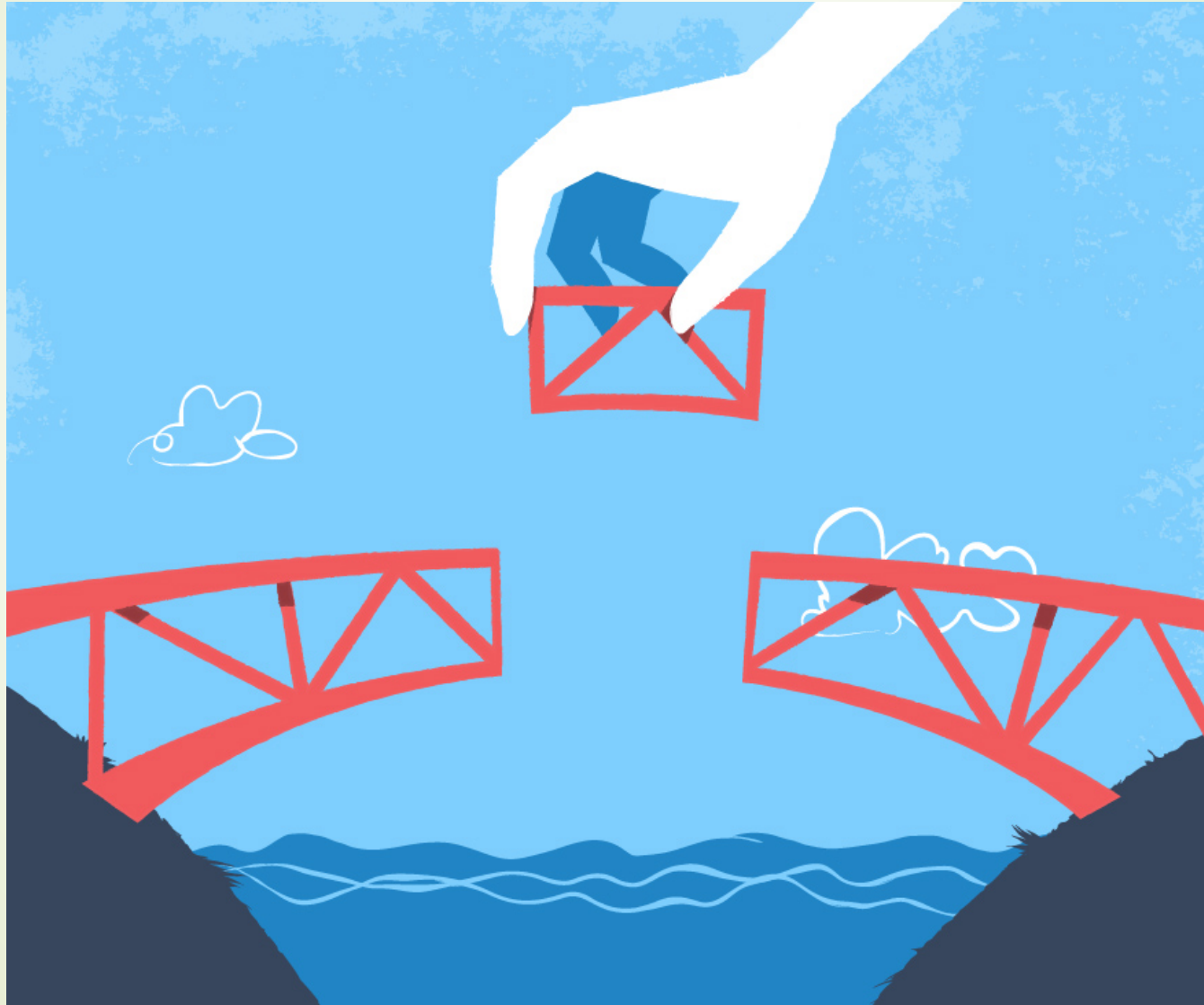
Marla J. Stelk

Executive Director

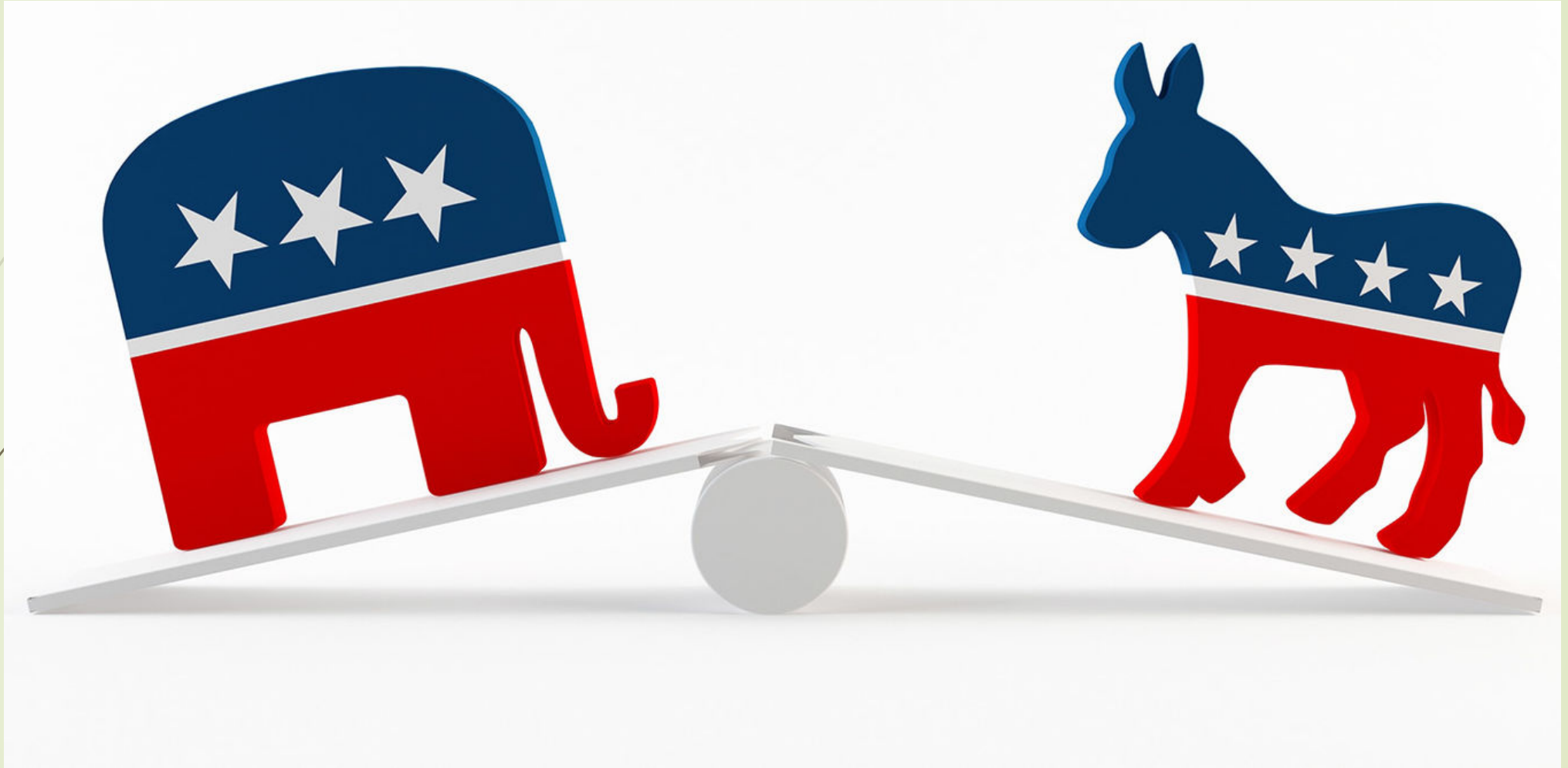
Association of State Wetland Managers



# Cooperative Federalism



[This Photo](#) by Unknown Author is licensed under [CC BY-ND](#)



[This Photo](#) by Unknown Author is licensed under [CC BY-ND](#)

Change makes us feel...



[This Photo](#) by Unknown Author is licensed under [CC BY-SA-NC](#)



[This Photo](#) by Unknown Author is licensed under [CC BY-SA](#)

**I do not fear the  
winds**

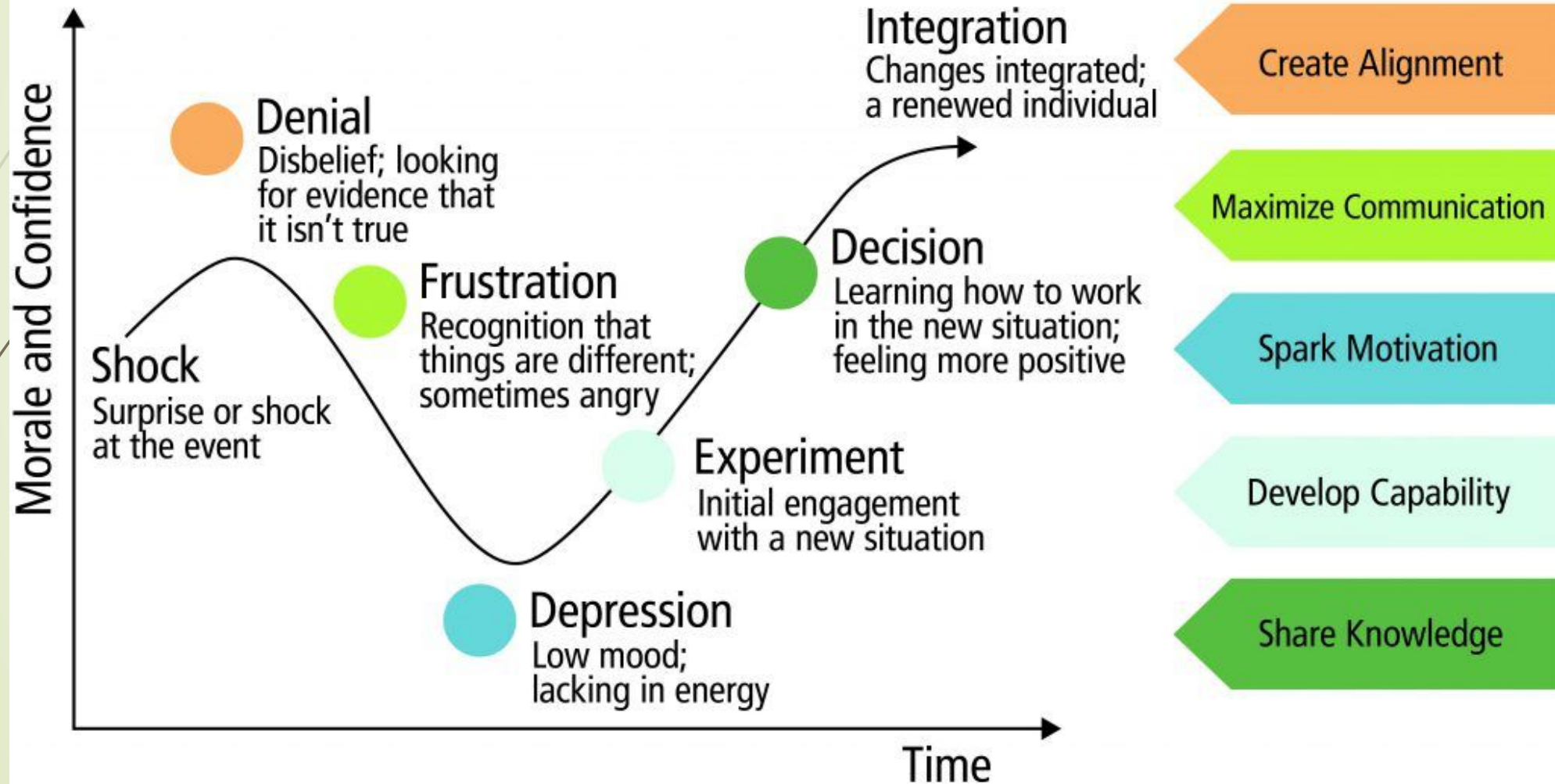


**of change.**

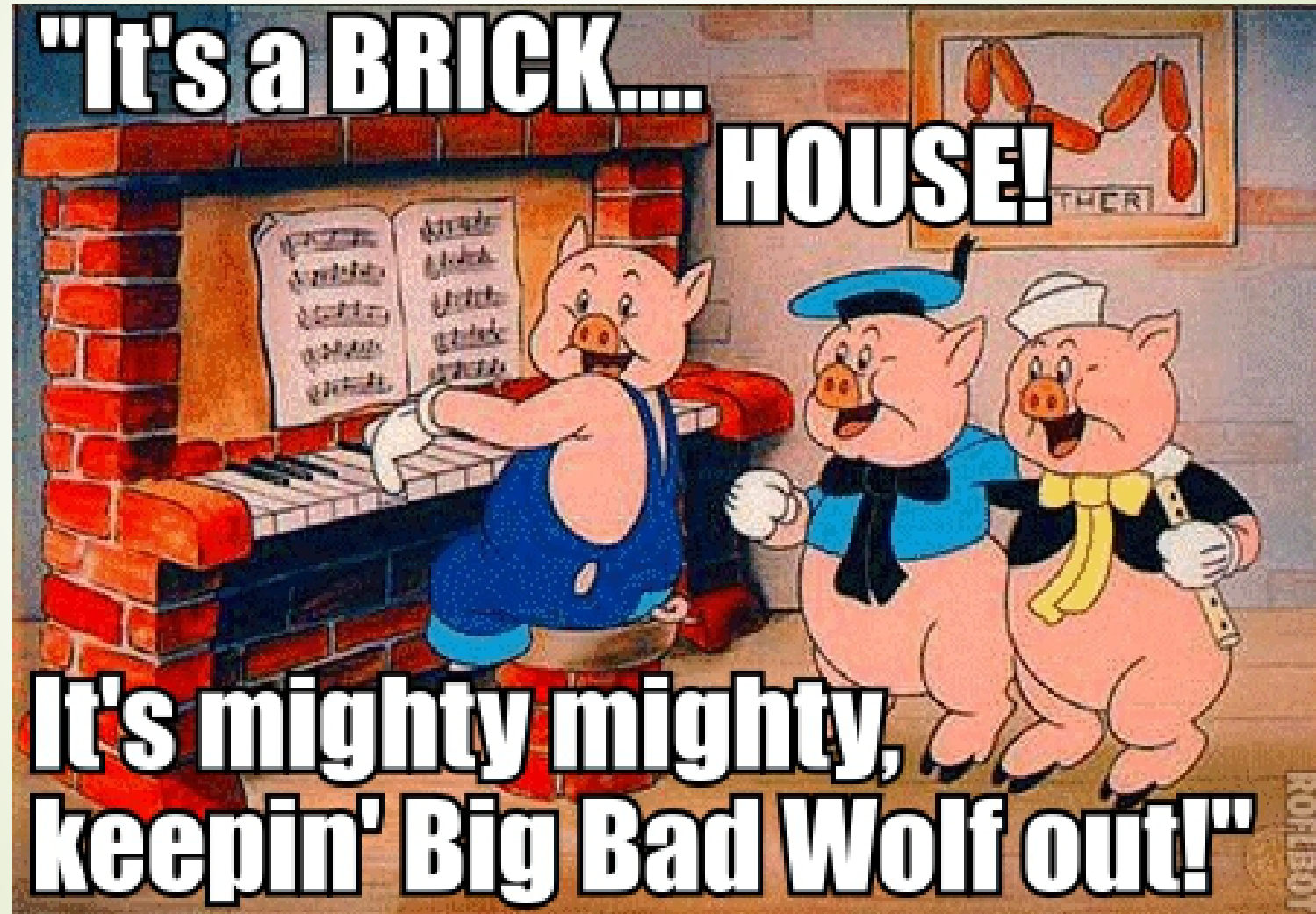
[This Photo](#) by Unknown Author is licensed under [CC BY-SA-NC](#)



# THE KÜBLER-ROSS CHANGE CURVE



# How Do We Build Capacity and Maintain Strong Programs?



<https://icanhaspixedust.wordpress.com/2009/01/19/its-a-brick-house-three-little-pigs/>



[This Photo](#) by Unknown Author is licensed under [CC BY-NC](#)

# Core Elements Framework

Monitoring  
&  
Assessment



Restoration  
&  
Protection



Water  
Quality  
Standards



Regulation



**WETLAND PROGRAM PLANS**



## Wetland Program Plans Handbook

*A resource to assist states and tribes in developing strategic approaches to achieve comprehensive Wetland Programs*



## Status and Trends Report on State Wetland Programs in the United States

Association of State Wetland Managers  
2015

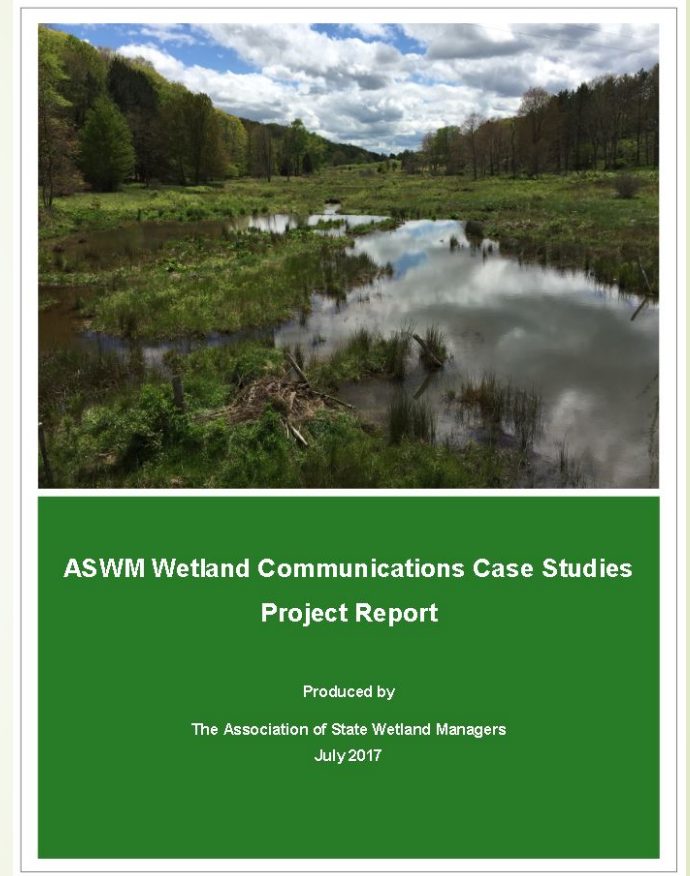


<https://www.aswm.org/wetland-programs>



# Common Characteristics of Strong Programs

- A commonly understood problem (between state and public)
  - What's at risk and why is it important
- Well articulated solution(s)
  - What will it take to fix it?
- Critical partnerships
  - Academia, multiple state agencies, public, NGOs
- State level administrative and legislative support
  - At very least – no opposition



# ASWM Projects for 2019

- Enhancing State and Tribal Roles in Wetland Protection through Regulatory Program Capacity Building
- Strengthening Opportunities for State Assumption of the §404 Dredge and Fill Program
- Urban Wetlands: Supporting and Sustaining a Healthy and Safe Urban Environment
- Integrating Wetlands into Natural Hazard Mitigation Planning
- Exploring Opportunities for Integrated Mapping and Functional Assessment of Riverine and Coastal Floodplains and Wetlands
- A Communication Strategy for Silviculture and Wetlands
- Beavers as a Riparian Partner in the Western U.S.
- Advanced Topics in Compensatory Mitigation
- Wetland Restoration and Communication Training for NRCS Conservation Planners

# Thank You!

Contact Info:

Marla J. Stelk

Executive Director

Association of State Wetland Managers

207-892-3399

[marla@aswm.org](mailto:marla@aswm.org)

