

Developing functional assessment for NYS wetlands

Laura J. Shappell, Ph.D.

Wetland Ecologist
NY Natural Heritage Program
Laura.Shappell@dec.ny.gov
nynhp.org/shappell



NY Natural
Heritage
Program

Department of
Environmental
Conservation

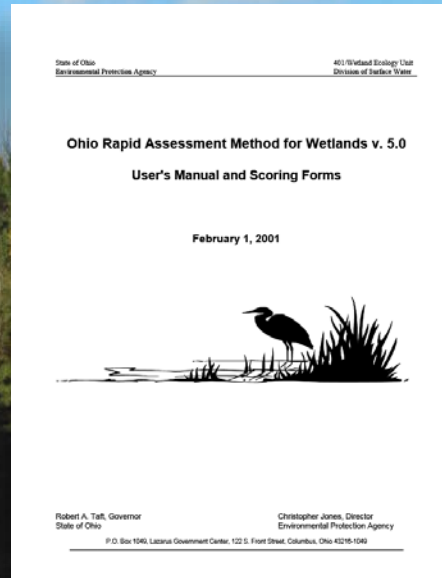
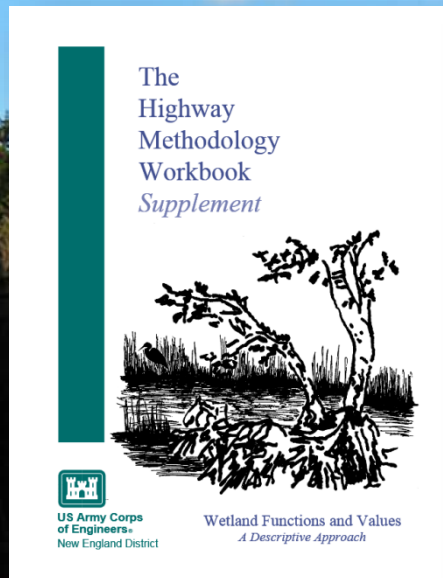


NYS lacks state-specific functional assessment methods

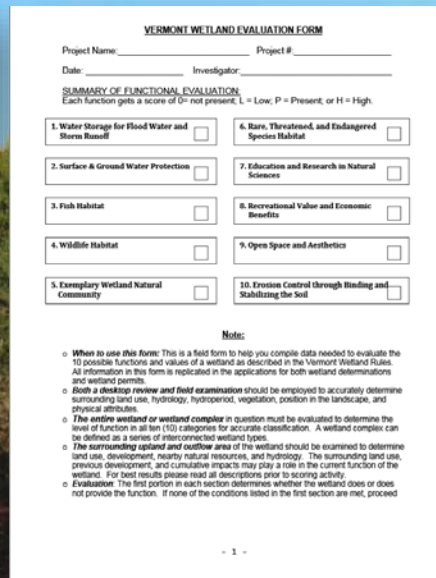
**Water quality
& security**

**Fish/wildlife
habitat**

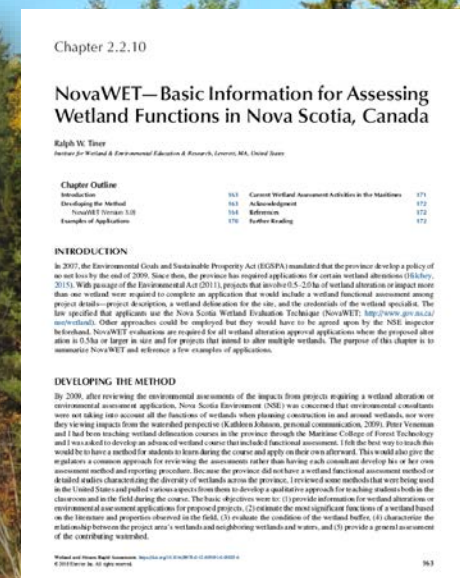
**Public
enjoyment**



[Ohio RAM]



[VT RAM]



The reality of developing a functional RAM for NYS....

**Water
quality &
security**



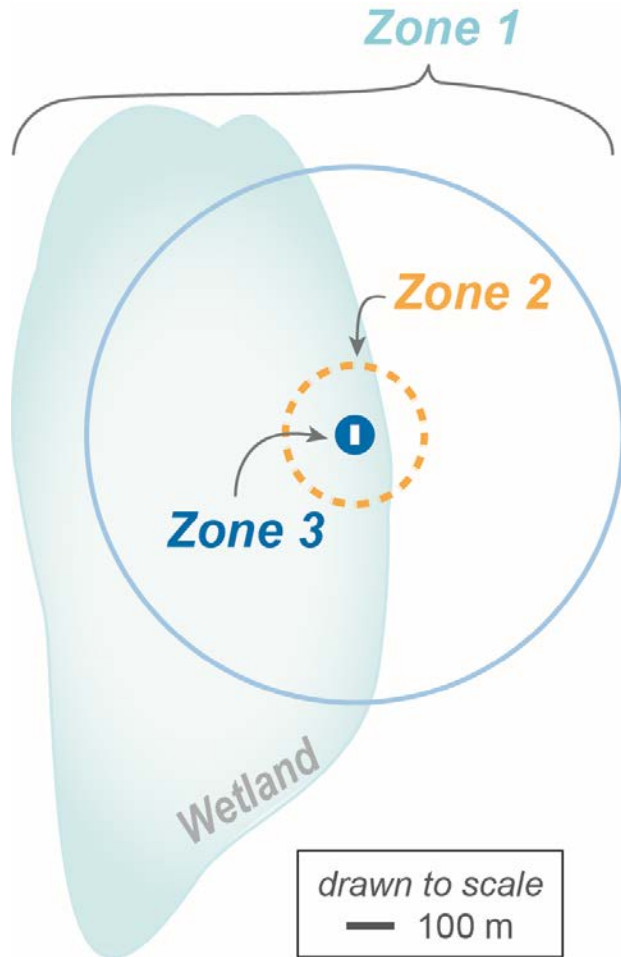
**RTE &
unique**

**Public
enjoyment**



**Fish &
wildlife
habitat**

Three-tiered sampling design



Zone 1, Landscape

Landscape Condition Asmnt. (LCA, NYRAM)

Wetland area/setting (F-RAM)

Zone 2

*RAM meander survey (140-m radius)

Zone 3

*RAM focused survey area (40-m r)

Vegetation macroplot (20 m x 50 m)

Rapid *and* functional *à la* NYRAM

nynhp.org/shappell

HYDROPERIOD MODIFICATION

H1. General hydroperiod alterations

Zone 1

Zone 2

Abs

Ditching, tile draining, or other dewatering methods

Stormwater inputs (e.g., source pipe, impervious surface/roads/parking lot)

Water inflow reduced by upstream structure

(dam / weir / culvert; including perpendicular road, railroad beds)

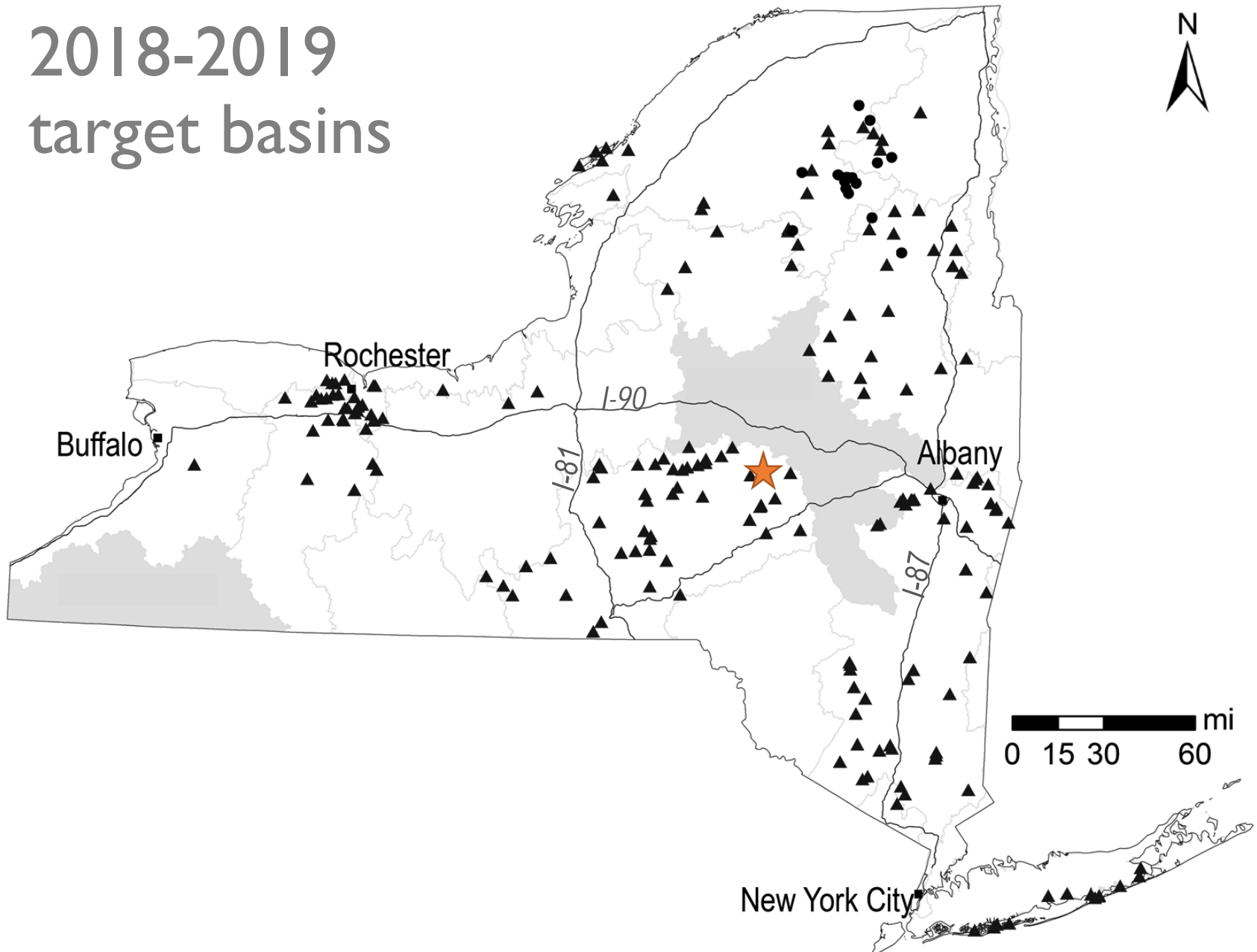
Water outflow reduced due to impounding structure (see above examples)

H2. Stream/riverine-specific modifiers

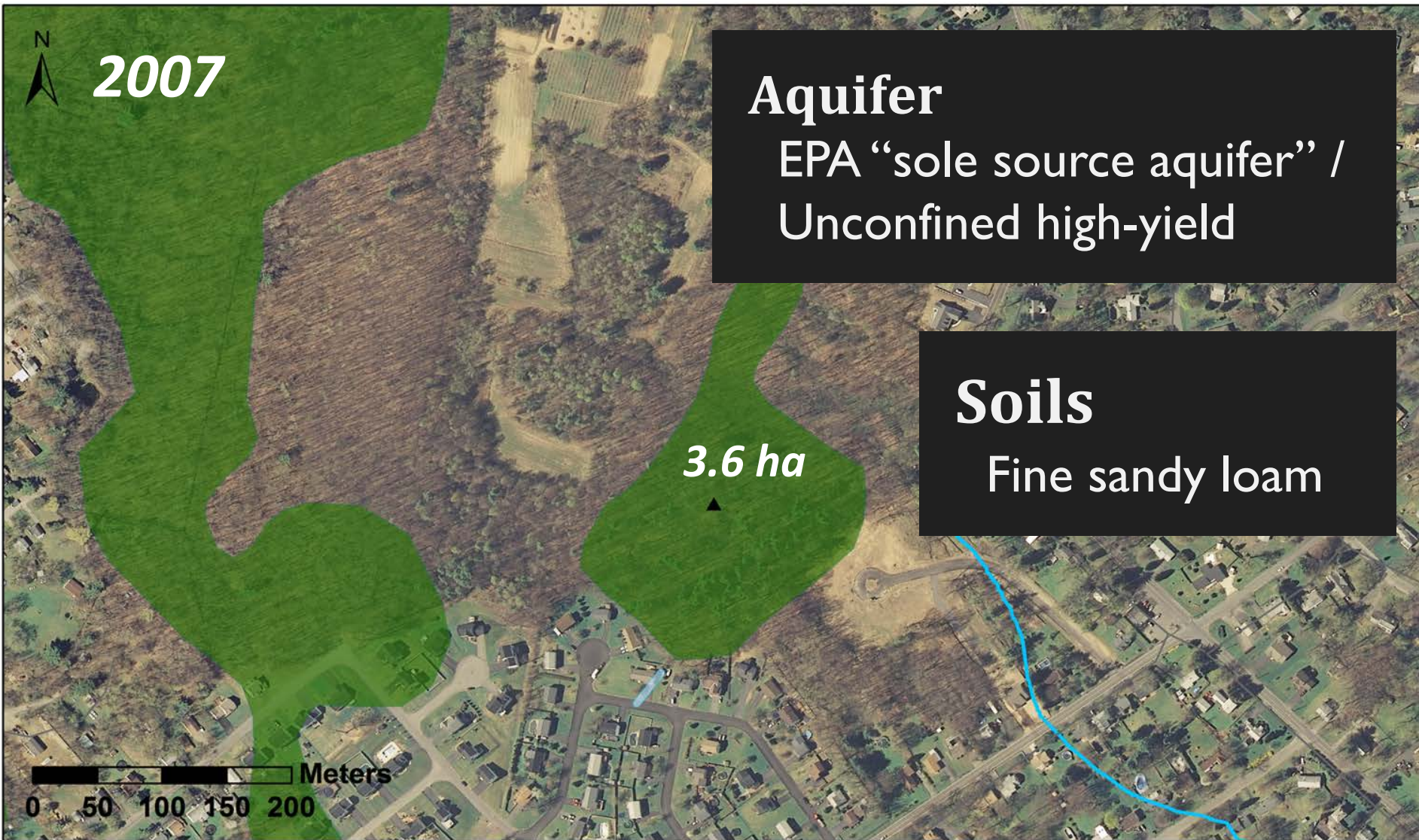
Artificial levee *parallel* to stream (including parallel road, railroad beds)

Channelized stream: straightened, hardened, or incised

2018-2019 target basins

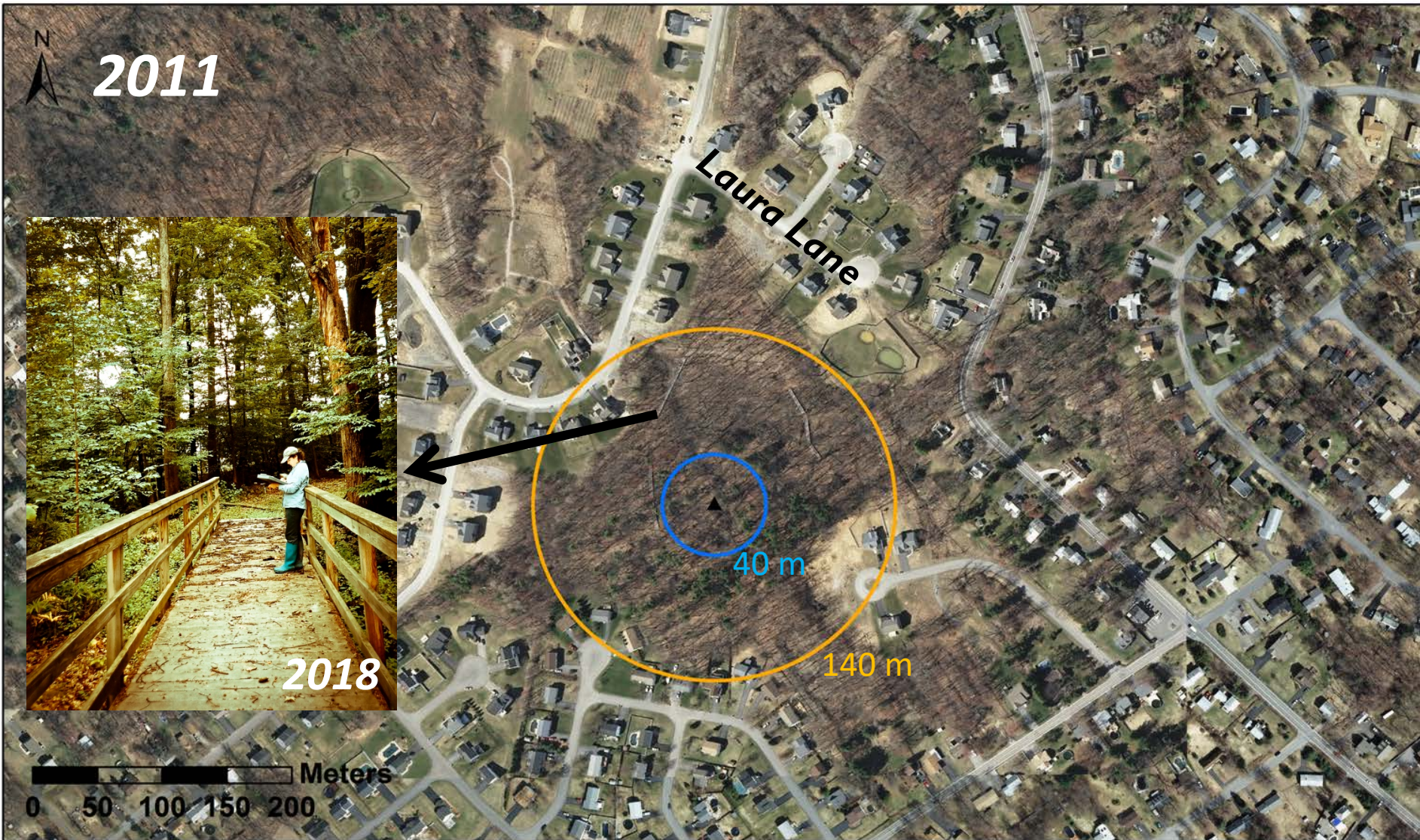


The little urban wetland that could



NWI wetland polygons displayed (USFWS 2016)

Development may shift “values”



NWI wetland polygons displayed (USFWS 2016)

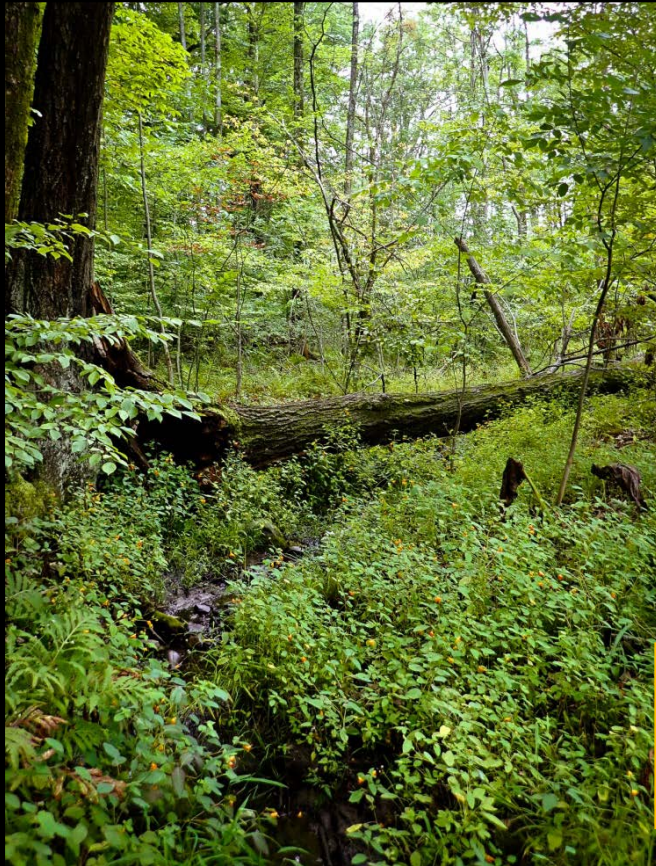
Red maple hardwood swamp



Surface & subsurface water



Groundwater
discharge



**Water quality
& security**



**Fish/wildlife
habitat**



**Public
enjoyment**

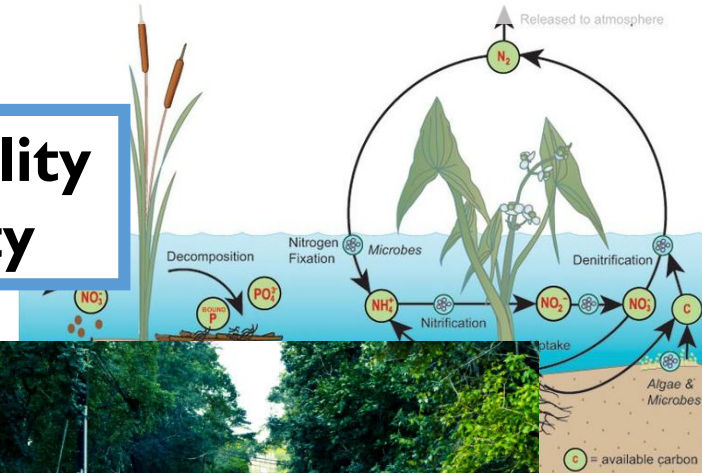


Surface & subsurface water

✓ Seasonally flooded depressions



**Water quality
& security**



Fish/wildlife habitat

Public enjoyment



Acknowledgements

Tim Howard, Greg Edinger,
DJ Evans, Elizabeth Spencer, Aissa
Feldmann, NYNHP staffers/techs

DEC Habitat Partners, SUNY-ESF
Kathleen Drake, EPA Region 2



New York
Natural Heritage
Program

Laura J. Shappell, Ph.D.

Wetland Ecologist, NYNHP
Laura.Shappell@dec.ny.gov
nynhp.org/shappell
(518) 402-8931

Research Funding

E.P.A. Wetland Program
Development Grant



Department of
Environmental
Conservation