

DELAWARE LIVING SHORELINE STORYMAP



Alison Rogerson, Brittany Haywood
Combined MAWWG
November 14, 2018



DELAWARE
LIVING
SHORELINES
COMMITTEE



- Showcase Delaware Estuary living shoreline projects
- Provide project photos and time series
- Serve as an easy to use information source
- Independently created by Delaware Living Shoreline Committee
- Targeted audience: new practitioners or homeowners

A Tour of Living Shorelines in Delaware

A "living shoreline" is a method of shoreline protection or restoration that is built using natural materials and native plants to mimic natural coastal habitats. Natural materials utilized for living shorelines include coconut-fiber logs (biologs) and mats, oyster shell bags, and live mussels. Living shorelines protect the shoreline from erosion and defend our coasts from damaging storm wave energy, all while encouraging native plants and wildlife. Throughout this map, you will find information on living shorelines that have been installed in Delaware.

This map is supported on Internet Explorer 9+, Chrome, Firefox and Safari

Use your mouse to scroll down for more information



Artistic rendering of an eroding marsh edge (left) compared to a living shoreline (right). Graphic



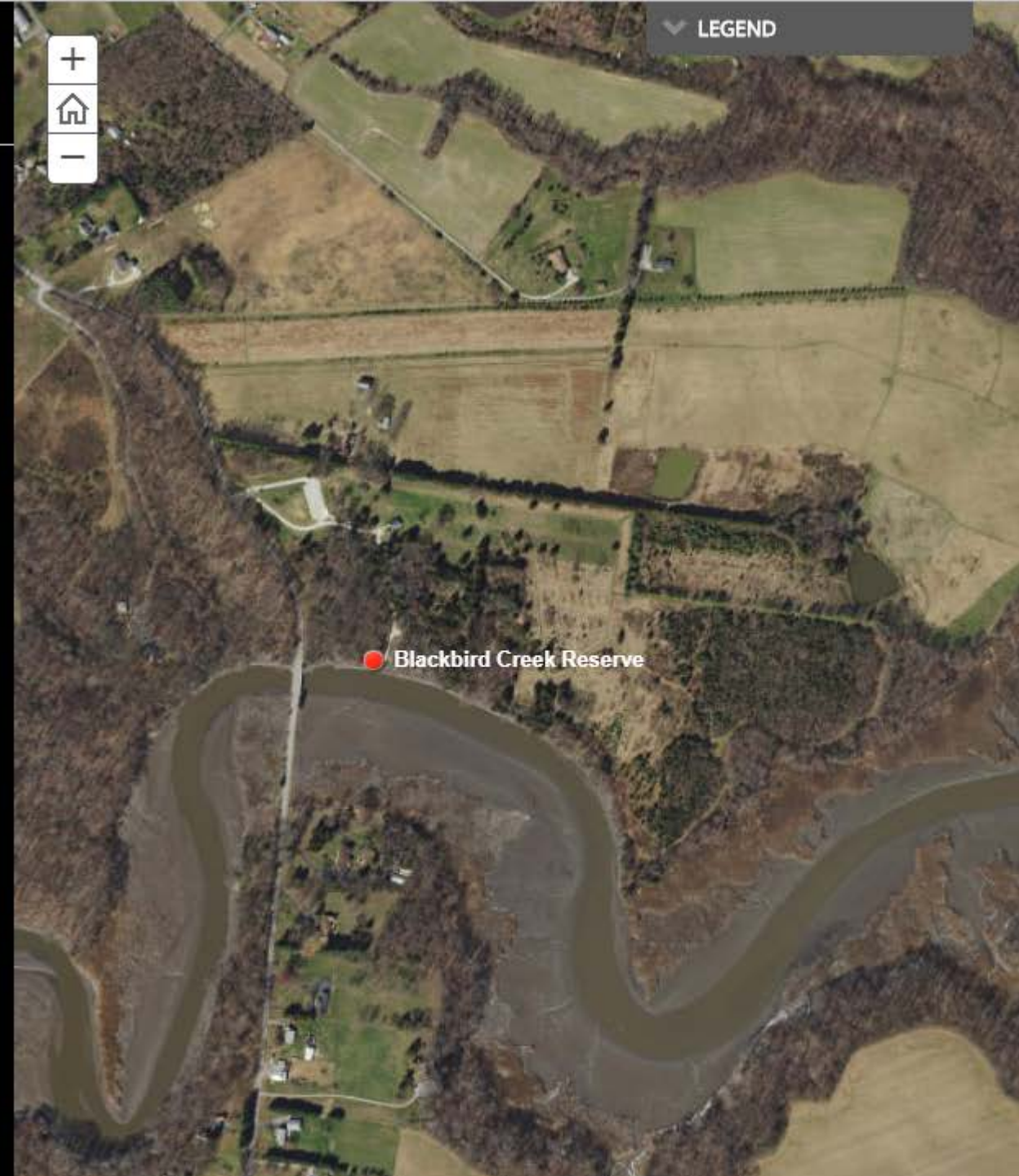
A Tour of Living Shorelines in Delaware

Blackbird Creek Reserve



The goal of the Blackbird Creek Reserve living shoreline is to:

1. Address erosion that was causing problems on the east and west side of the Reserve's boat ramp; two trees had already fallen into the Blackbird Creek and more were at risk of falling.
2. Serve as a demonstration site to landowners and contractors when bank erosion control is needed.



A Tour of Living Shorelines in Delaware



April 13, 2015 - The existing eroded shoreline near the boat ramp



May 27, 2015 - After installation and planting of living shoreline

SCROLLING PANEL

In-action

Before Photo

After Photos



A Tour of Living Shorelines in Delaware



May 27, 2015 - After planting

This living shoreline project was installed by the Delaware Department of Natural Resources and Environmental Control's (DNREC) Wetland Monitoring and Assessment Program and Delaware Coastal Programs.

For more information about the Blackbird Creek Reserve Living Shoreline, please contact:

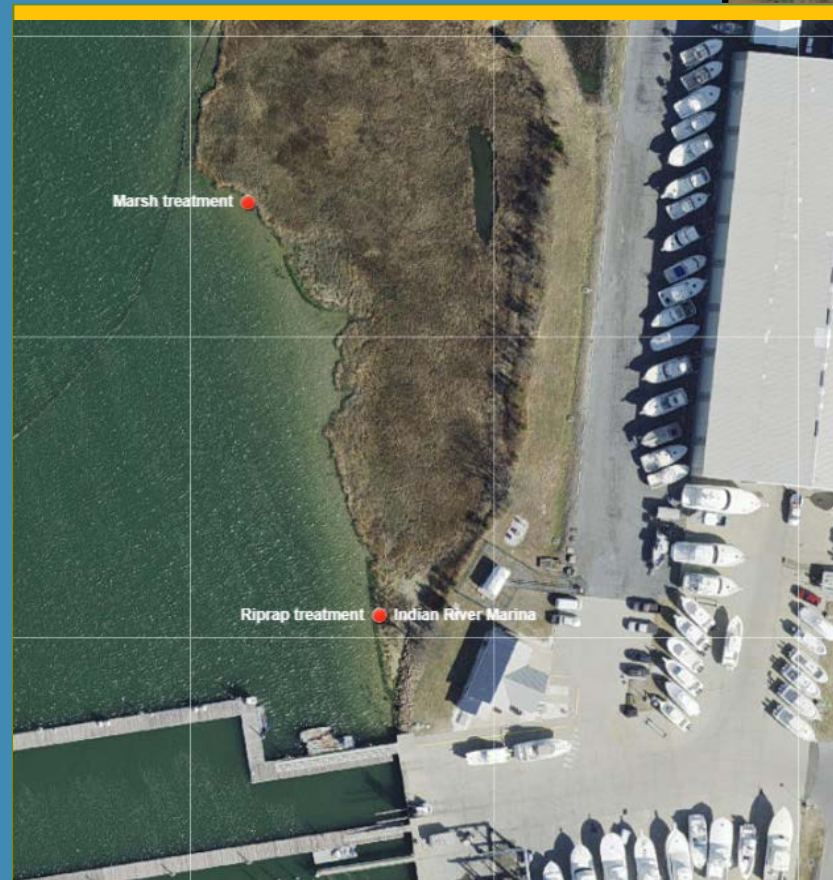
DNREC Wetland Monitoring and Assessment Program
302-739-9939
Mark.Biddle@state.de.us



Contact Information

ZOOMING MAP PANEL

SITE LOCATION-REGION



IMBEDDED FEATURES

You Tube video

Committee contact

Links to professionals

A Tour of Living Shorelines in Delaware

More information



About the Living Shorelines Committee

The Delaware Living Shoreline Committee is a work group dedicated to facilitating the understanding, peer review and implementation of living shoreline tactics within the State of Delaware. For more information about this committee please contact Alison Rogerson at Alison.rogerson@state.de.us.

Participating Organizations

[Aecom](#)

[Cardno](#)

[Delaware Center for the Inland Bays](#)

[Delaware Department of Natural Resources and Environmental Control](#)

[Delaware Department of Transportation](#)

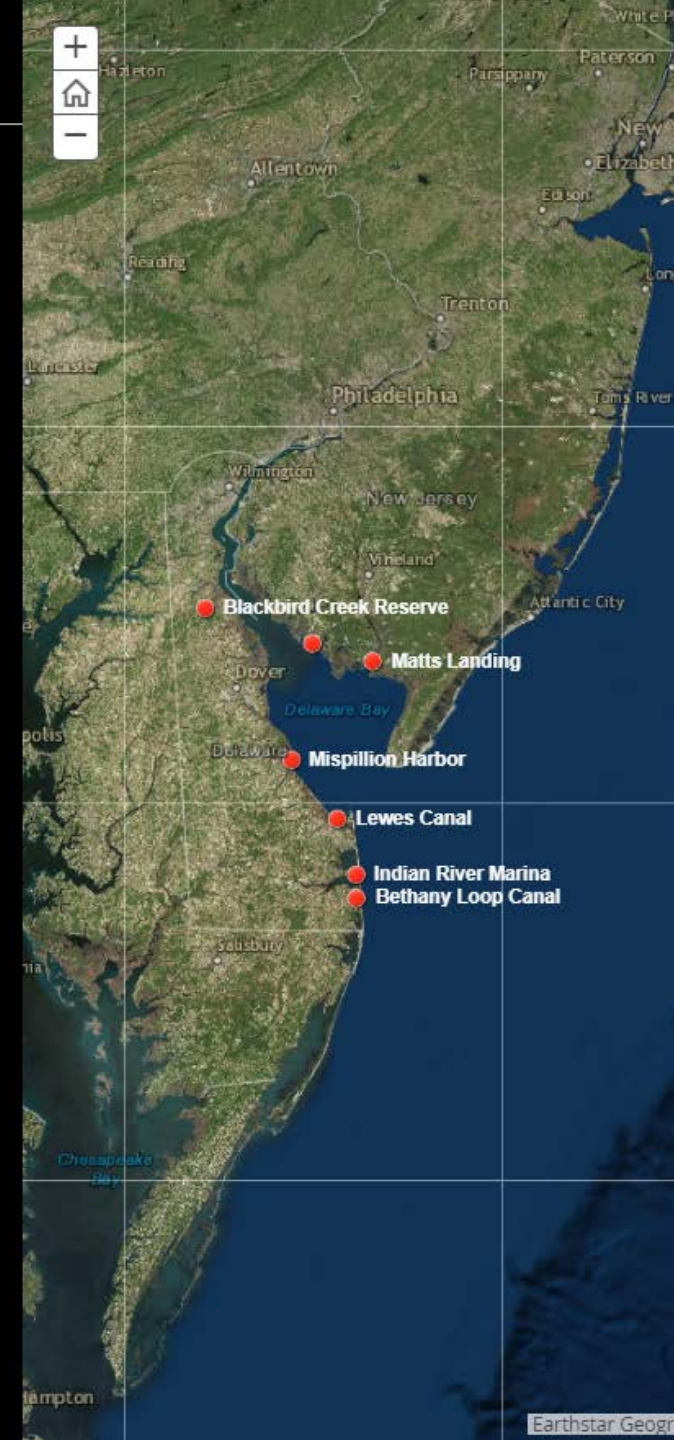
[Delaware National Estuarine Research Reserve](#)

[Delaware Nature Society](#)

[Delaware Wild Lands](#)

[New Jersey Department of Environmental Protection](#)

[Partnership for the Delaware Estuary](#)



IMBEDDED FEATURES

Commercial Sources

Related publications

Online video

Where to Buy Living Shoreline/Erosion Control Materials:

Vegetation

[Mid Atlantic Plant Company Inc.](#) (DE)

[North Creek Nurseries](#) (PA)

[Ernst Conservation Seed, Inc.](#) (PA)

[Mid Atlantic Natives/Superior Nursery & Garden Center](#) (PA)

[Aquascapes Unlimited, Inc.](#) (PA)

[Pinelands Nursery](#) (NJ)

[New Moon Nurseries](#) (NJ)

[Environmental Concern](#) (MD)

Materials

[Envirotech](#) (DE)

[L&M Supply Company](#) (PA)

[Pinelands Nursery](#) (NJ)

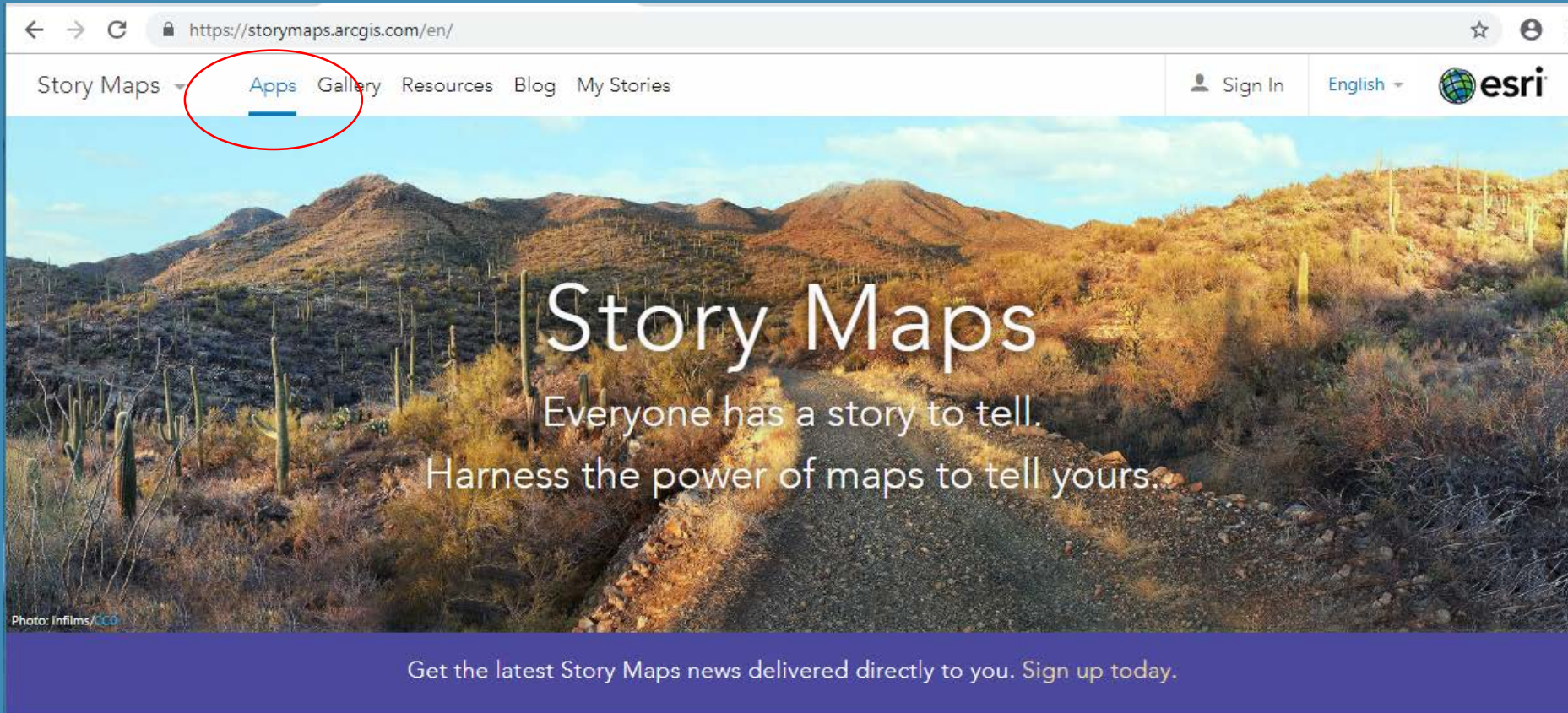
[Allied Concrete](#) (VA)

Related Articles

[Delaware groups create living shoreline from dying marsh](#)

Delaware Estuary Living Shoreline Initiative Video





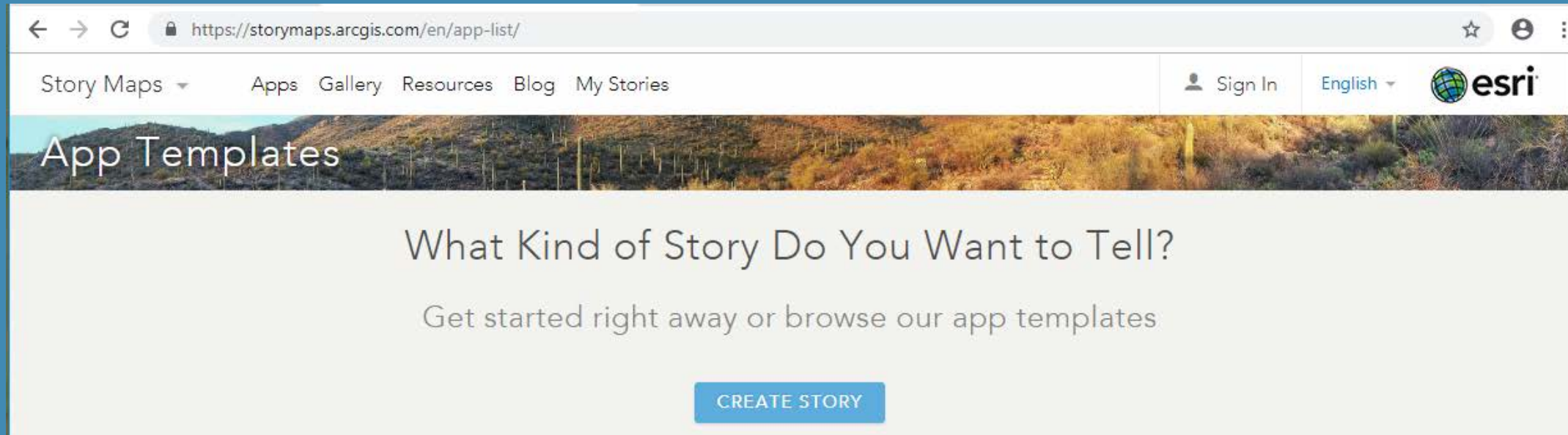
Engage and Inspire Your Audience



Story Map of the Month

Louisiana's Storm Surge-Based Flood Risk

Apps



A Rich Multimedia Narrative




Story Map JournalSM

Create an in-depth narrative organized into sections. As readers scroll through the sections in your Map Journal they see the content associated with each section, such as a map, 3D scene, image, video, etc. Narrative text and images can be displayed in a side panel, or in a floating panel that appears on top of your 'main stage' content.

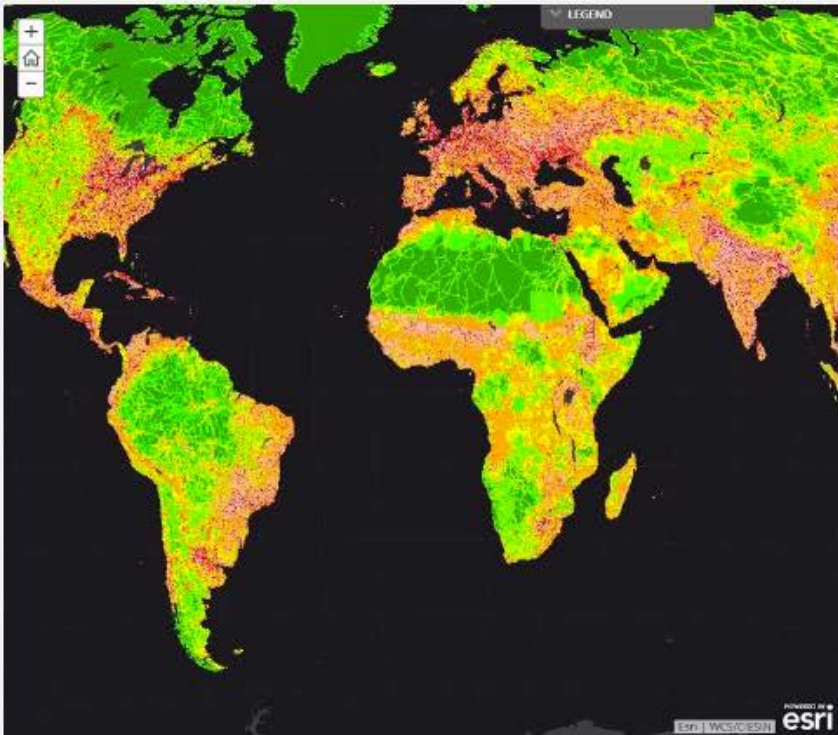
[BUILD](#)[OVERVIEW](#)[GALLERY](#)[TUTORIAL](#)[FAQS](#)[BLOG](#)

[←](#) [→](#) [↻](#) <https://storymaps.arcgis.com/en/app-list/map-journal/> [☆](#) [e](#) [⋮](#)

[Story Maps ▾](#) [Apps](#) [Gallery](#) [Resources](#) [Blog](#) [My Stories](#) [Sign In](#) [English ▾](#) 

Story Map Journal

[Overview](#) [Gallery](#) [Tutorial](#)



A story map.

We are Living in
The Age of Humans

75%


of Earth's land surface outside of ice sheets is managed by humans.

The map at left, developed by the Wildlife Conservation Society, reflects patterns of roads, urban concentrations, agriculture and other factors to show the extent of human modification of the landscape. Green represents minimal human impact; orange, red and purple reflect a high degree of human activity.

CLICK on the locations below to see examples of highly managed landscapes:

The Netherlands is home to this geometric array of fields and villages called the *Zuiderzeewerken*, an expanse of reclaimed land created by diking and draining portions of the *Zuiderzee*, a shallow inlet of the North Sea.

British Columbia, Canada has been transformed by intensive clear-cut logging. Vast woodland tracts

POWERED BY 

Create compelling multimedia narratives

The Story Map JournalSM app template is ideal when you want to combine narrative text with maps and other content. A Map Journal contains entries, called sections, that your readers can simply scroll through. Each section in a Map Journal has an associated map, image, video or web page. 'Story actions' can also be defined in the narrative text so that, for example, clicking a word automatically zooms the section's map to a particular location.

[BUILD A MAP JOURNAL](#)

[View this story map](#)

LAYOUT OPTIONS



Side Panel



Floating Panel



TIPS

- ESRI account (contact your IT or GIS department for access)
- Compile photos and videos to share (landscape orientation is best)
- Store photos on Flickr or Google+ (can pay extra to store photos on ESRI site)
- Works best in Chrome
- Not mobile friendly but mobile options

The word "TIPS" is displayed in a stylized font where each letter is contained within a colored square. The 'T' is white on a red square, the 'I' is white on a green square, the 'P' is white on a blue square, and the 'S' is white on an orange square. Each square is suspended by a thin grey string from a horizontal bar above it. The entire graphic is centered within a white rectangular box with a thin black border.

TIPS

- Can create maps online or on GIS online and then upload
- State or Group accounts- multiple editors
- Limited options for styling and fonts
- Ability to create own page if you know coding
- New features available often

Web map viewer online

← → ↻ ⓘ Not secure | dnrec.maps.arcgis.com/home/webmap/viewer.html?webmap=8d7a38084070451ab4d1b5076705b822 ☆ 🔒 📷 📄

Home ▾ Livingshorelines ✎ New Map ▾ Create Presentation 📄 Brittany ▾

📄 Details ➕ Add ▾ ✎ Edit 🗑 Basemap 📄 Save ▾ 📄 Share 🖨 Print ▾ 📍 Directions 📏 Measure 📌 Bookmarks 🔍 Find Address

📄 📄 📄

Contents

- ☑ Living Shorelines
- ☑ IRsites
 - 📄 📄 📄 📄 📄
- ▶ 📄 Imagery with Labels

Map showing the Delaware Bay area, including locations like Philadelphia, Wilmington, Baltimore, and various coastal areas. Key locations marked with red dots include Blackbird Creek Reserve, Money Island, Motts Landing, Mispillion Harbor, Lewes Canal, Indian River Marina, and Bethany Loop Canal. The map also shows the Delaware River and various counties like Kent, Sussex, and Worcester.

Esri.com | ArcGIS Marketplace | Help | Terms of Use | Privacy | Contact Esri | Report Abuse

Earthstar Geographics | Esri | HERE | Garmin

POWERED BY **esri**

Thank you!

Alison Rogerson, DNREC

Alison.Rogerson@state.de.us

Brittany Haywood, DNREC

Brittany.haywood@state.de.us

Shortened URL:

<http://de.gov/livingshorelinesites>

